

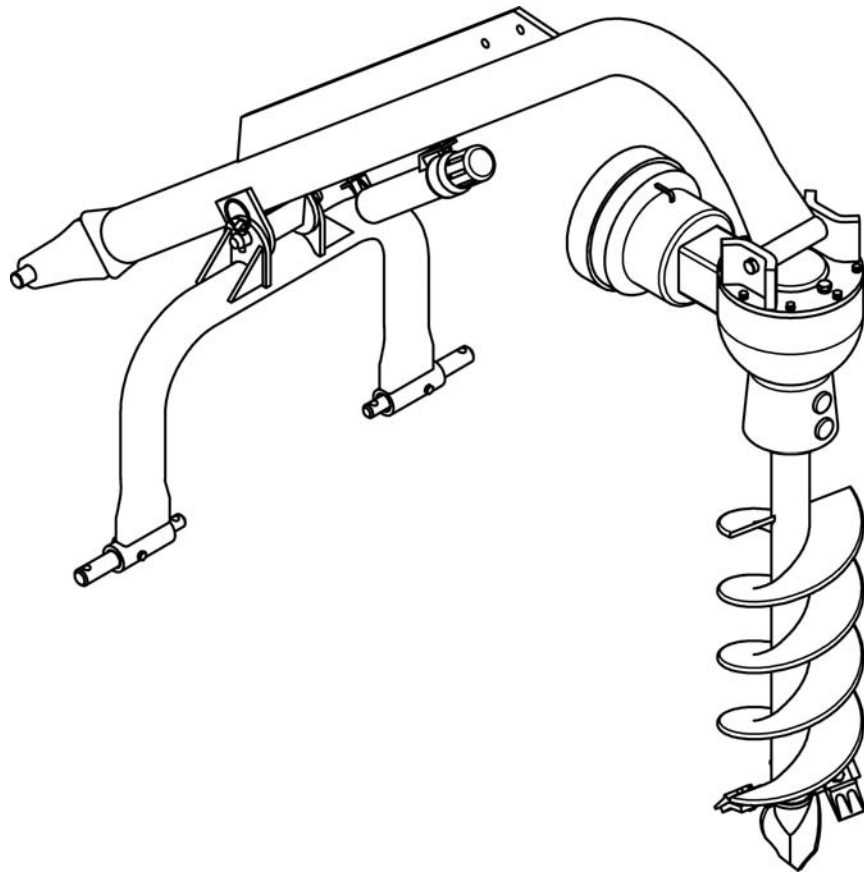
# **BEFCO®**

## **Parts Manual**

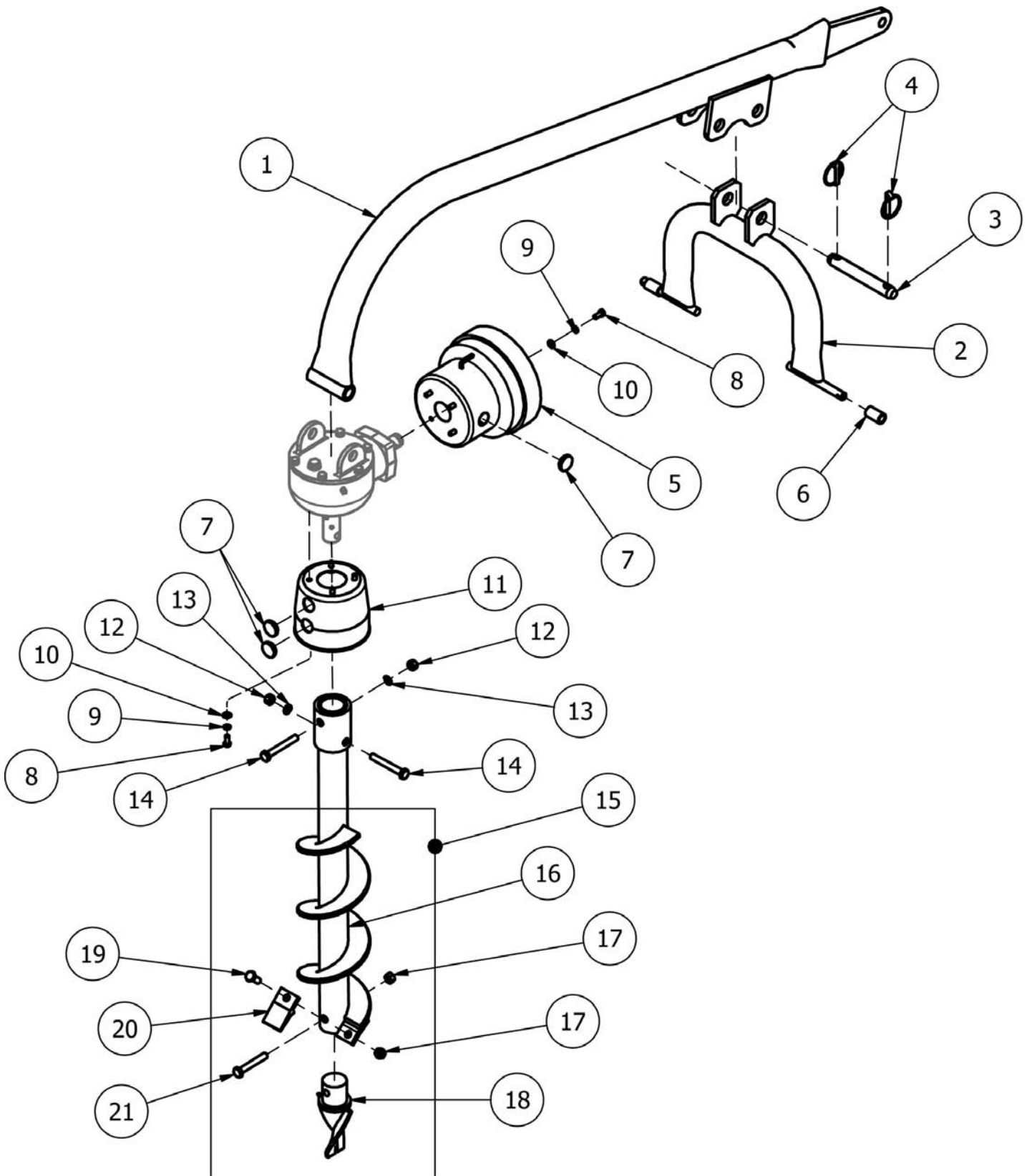
### **MOLE**

**Post Hole Diggers**

**100-512, 200-512, 300-512, 400-512**



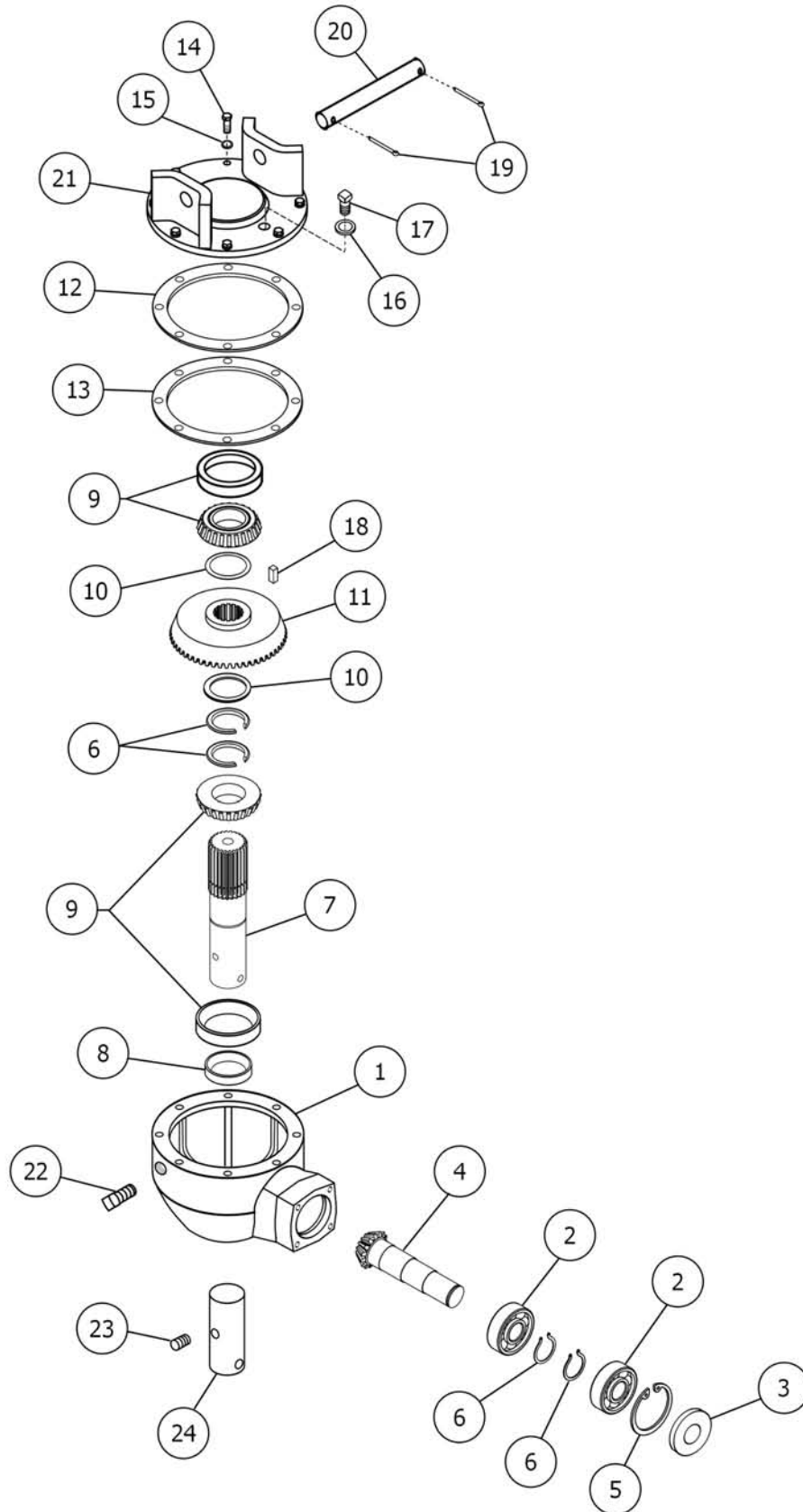
**Manual 961-125B  
December 2020**



Ref.	Part #	Description	Qty.
1	503-807B	Boom assembly; 100-512	1
2	503-808B	Yoke cat. 0/1; #277281 & below <sup>1</sup>	1
	001-8511	Yoke cat. 1; #277282 & above	1
3	501-544B	Pin, top link 1"x5.38" Z; #296542 & below <sup>2</sup>	1
	001-8020	Pin, hitch Ø25x148.5 Z; #296543 & above	1
4	001-8266	Lynch pin Ø11x45	2
5	001-8038	Guard, gearbox	1
6	002-604B	Bushing cat. 0/1; #277281 & below	2
7	000-6647	Cap, guard	4
8	503-869B	Bolt HH 5/16"-18x0.75" G5 Z F	8
9	160-5017	Washer lock 5/16" Z	8
10	160-5021	Washer flat 5/16" USS Z	8
11	001-8530	Guard, auger	1
12	000-1106	Nut HH M12-1.75 C6 Z MD	2
13	000-1077	Washer lock Ø12 Z	2
14	001-5122	Bolt HH M12-1.75x90 C8.8 Z P	2
15	106-531	Auger, 6" single flight 36" long, complete	-
	109-531	Auger, 9" double flight 36" long, complete	-
	112-531	Auger, 12" double flight 36" long, complete	-
16	7900106	6"x32" auger weldment (order complete auger)	-
	7900109	9"x32" auger weldment (order complete auger)	-
	7900112	12"x32" auger weldment (order complete auger)	-
17	003-0064	Nut PT M12-1.75 C6 TK Z; 6" auger	2
	003-0064	Nut PT M12-1.75 C6 TK Z; 9" auger	3
	003-0064	Nut PT M12-1.75 C6 TK Z; 12" auger	5
18	501-541B	Auger point, standard	1
	503-928B	Auger point, fish tail	1
19	001-5255	Bolt HH M12-1.75x30 C8.8 Z F; 6" auger	1
	001-5255	Bolt HH M12-1.75x30 C8.8 Z F; 9" auger	2
	001-5255	Bolt HH M12-1.75x30 C8.8 Z F; 12" auger	4
20	501-540B	Knife, 6" auger	1
	501-540B	Knife, 9" auger	2
	501-540B	Knife, 12" auger	4
21	019-2236	Bolt HH M12-1.75x70 C8.8 Z P	1

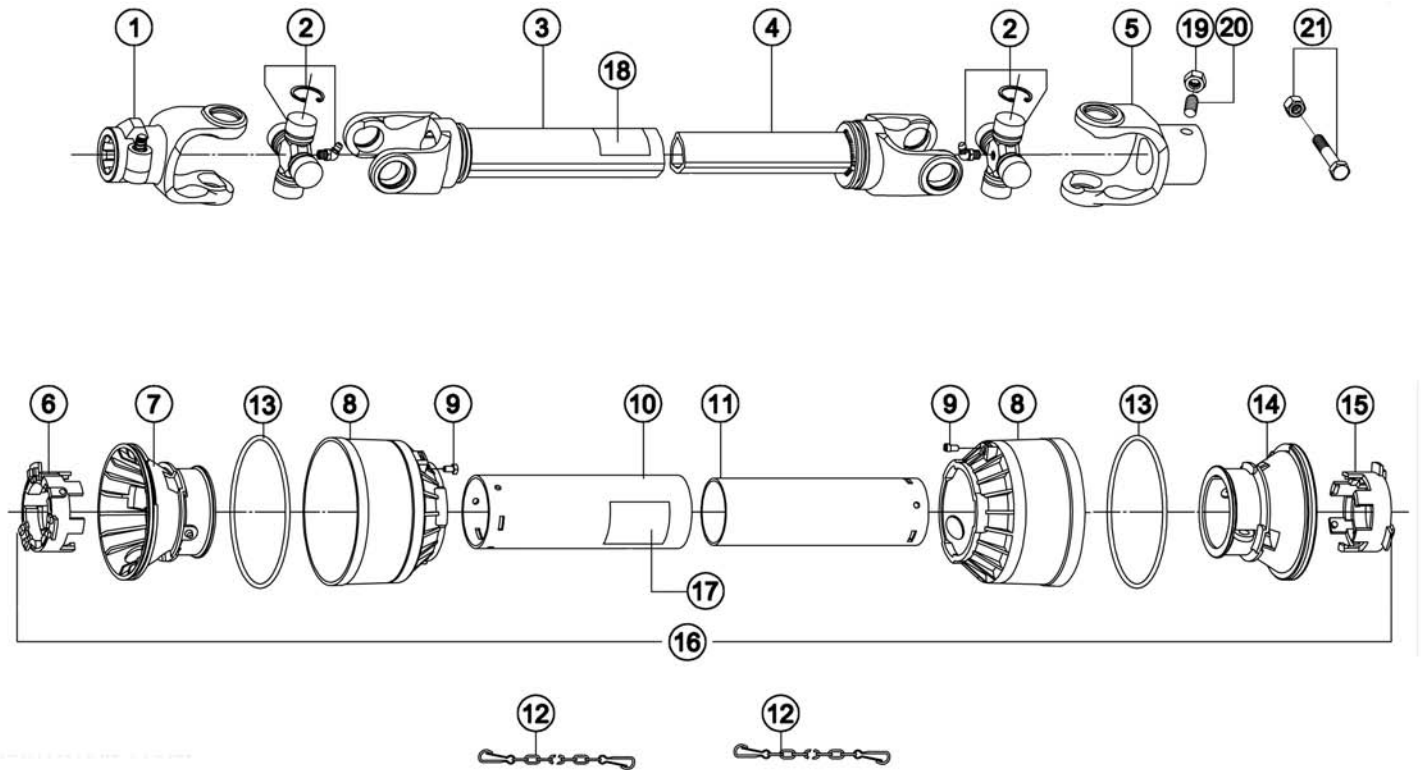
<sup>1</sup> Interchangeable with part #001-8511 if Mole 100 is used on a tractor with a cat. 1 hitch.

<sup>2</sup> Pin no longer available, to replace order one (1) hitch pin #001-8020 and one (1) lynch pin #001-8266.



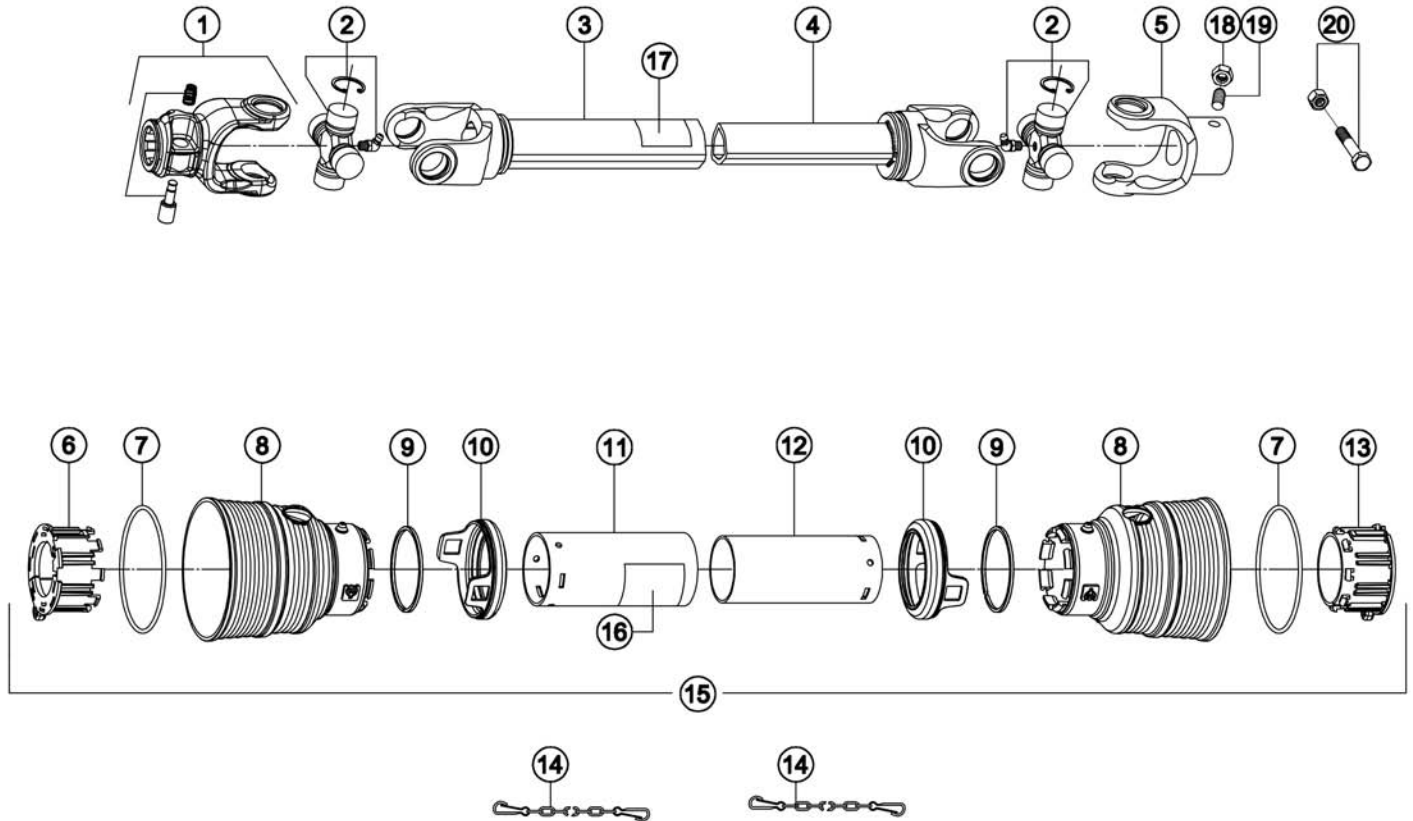
Ref.	Part #	Description	Qty.
1	503-768B	Housing, gearbox; 100-512	1
2	002-5332A	Bearing 6207	2
3	003-0211	Oil seal 35.72.10	1
4	503-769B	Pinion gear w/shaft Z10	1
5	002-5329	Snap ring, inner Ø72	1
6	004-2122	Snap ring, outer Ø35	4
7	503-780B	Output shaft	1
8	503-435B	Oil seal 35.54.8	1
9	000-7172A	Bearing 30207	2
10	503-781B	Shim (0.20)	-
11	503-782B	Output gear Z30	1
12	503-783B	Gasket, hanger cap (0.10)	-
13	503-784B	Gasket, hanger cap (0.25)	-
14	009-1446	Bolt HH M08-1.25x25 C8.8 Z F	6
15	000-3144	Washer lock Ø8 Z	6
16	503-785B	Washer copper sealing Ø18; 100-512 #314796 & below	1
17	503-786B	Fill plug HH M18-1.25; 100-512 #314796 & below	1
	502-257B	Fill plug ½"; 100-512 #314797 & above	1
18	503-787B	Key 10x10x22	1
19	000-5638	Cotter pin Ø5x50 Z	2
20	503-788B	Hanger shaft	1
21	503-789B	Hanger cap <sup>3</sup>	1
22	503-428B	Check plug HH 1/8"	1
23	502-625B	Roll pin Ø6x50	1
24	503-790B	Spacer, output shaft	1
	503-745B	Gearbox 540 rpm, complete; 100-512	-
	Note:	Fill using approx. 40 fl.oz. (1.25 qt.) of SAE 90W gear oil.	

<sup>3</sup> Serial #314796 & below must also order fill plug #502-257B when ordering hanger cap.



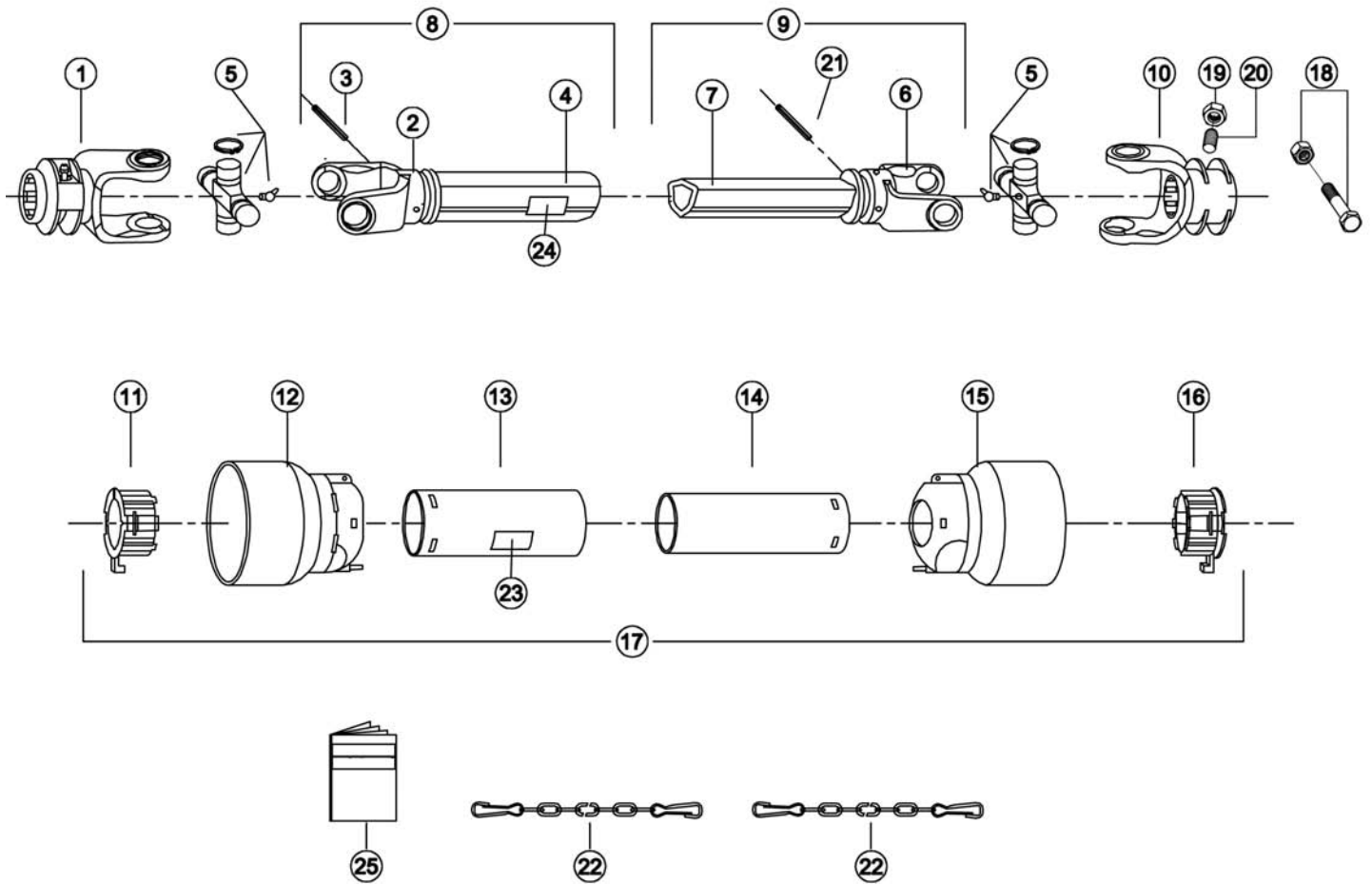
Ref.	Part #	Description	Qty.
1	1022010C	PTO yoke (tractor end)	1
2	1002020C	Cross w/bearing	2
3	1942084NC	Outer tube w/yoke	1
4	1952086NC	Inner tube w/yoke	1
5	1072041C	PTO yoke (implement end)	1
6	1782210C	Locking ring, outer tube; #277293 & below	1
7	1784201C	Rigid cone, outer tube; #277293 & below	1
8	1784203C	Standard cone; #277293 & below	2
9	1784212C	Pin; #285372 & below	2
10	1773082C	Shield, outer tube	1
11	1872082C	Shield, inner tube	1
12	1006065C	Chain, anti-rotation	2
13	1213233C	Stiffening ring; #277293 & below	2
14	1784202C	Rigid cone, inner tube; #277293 & below	1
15	1782211C	Locking ring, inner tube; #277293 & below	1
16	90SS2082C	Shield, complete; #277293 & below <sup>4</sup>	1
17	950-463B	Decal "DANGER - Rotating driveline, keep away" outer shield	1
18	950-464B	Decal "DANGER - Guard missing, do not operate" outer tube	1
19	503-425B	Nut HH 1/4"-20 G2 Z	1
20	501-568B	Set screw 1/4"-20x0.75" N	1
21	503-758B	Bolt HH 1/4"-20x2.50" G2 Z P w/nut ES 1/4"-20	1
	948-853B	Driveline, complete; 100-512	-

<sup>4</sup> Complete shielding is interchangeable with part #96SS2082C.



Ref.	Part #	Description	Qty.
1	1022010C	PTO yoke (tractor end)	1
2	1002020C	Cross w/bearing	2
3	1942084NC	Outer tube w/yoke	1
4	1952086NC	Inner tube w/yoke	1
5	1072041C	PTO yoke (implement end)	1
6	1782710C	Locking ring, outer tube; from #277294 to #306749	1
7	1211733C	Stiffening ring; from #277294 to #306749	2
8	1781703C	Standard cone; from #277294 to #306749	2
9	1211735C	Safety ring; from #277294 to #306749	2
10	1881709C	Safety sleeve; from #277294 to #306749	2
11	1773082C	Shield, outer tube	1
12	1872082C	Shield, inner tube	1
13	1782711C	Locking ring, inner tube; from #277294 to #306749	1
14	1006065C	Chain, anti-rotation	2
15	96SS2082C	Shield, complete	1
16	950-463B	Decal "DANGER - Rotating driveline, keep away" outer shield	1
17	950-464B	Decal "DANGER - Guard missing, do not operate" outer tube	1
18	503-425B	Nut HH 1/4"-20 G2 Z	1
19	501-568B	Set screw 1/4"-20x0.75" N	1
20	503-758B	Bolt HH 1/4"-20x2.50" G2 Z P w/nut ES 1/4"-20	1
	948-853B	Driveline, complete; 100-512 <sup>5</sup>	-

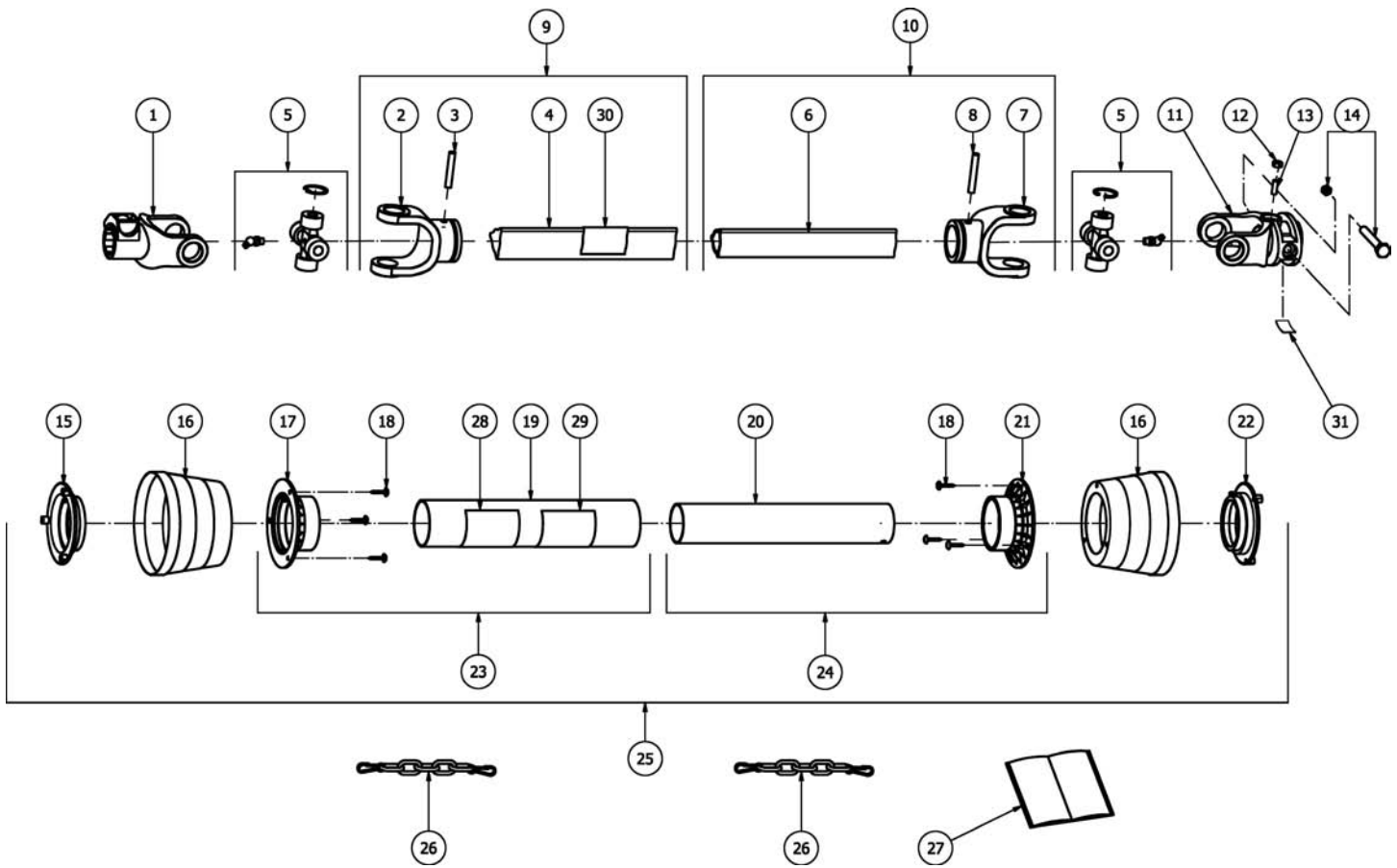
<sup>5</sup> Complete driveline is interchangeable with #050-0150.



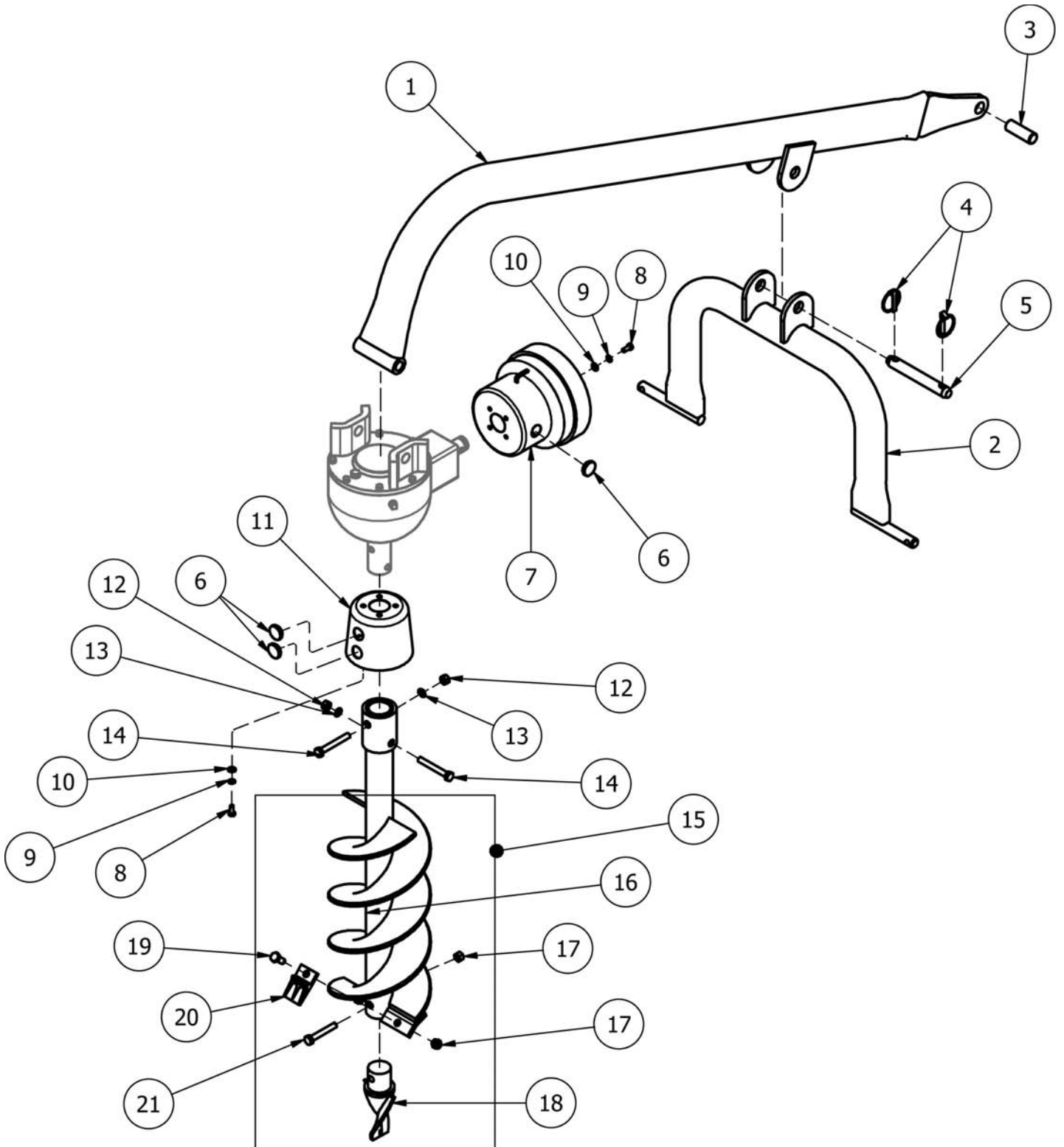


Ref.	Part #	Description	Qty.
1	1002138A	PTO yoke (tractor end)	1
2	1902010A	Yoke, outer tube	1
3	000-8679	Roll pin Ø8x55	1
4	3020902A	Outer tube	1
5	1802010A	Cross w/bearing	2
6	1902012A	Yoke, inner tube	1
7	3120902A	Inner tube	1
8	Z020902A	Outer tube w/yoke, complete	1
9	Z120902A	Inner tube w/yoke, complete	1
10	1102909A	PTO yoke (implement end)	1
11	6002010A	Locking ring, outer tube; from #306750 to #327531	1
12	6014010A	Standard cone, outer tube; from #306750 to #327531	1
13	5820842EA	Shield, outer tube;from #306750 to #327531	1
14	5820842IA	Shield, inner tube;from #306750 to #327531	1
15	6014012A	Standard cone, inner tube; from #306750 to #327531	1
16	6002012A	Locking ring, inner tube; from #306750 to #327531	1
17	P32103SSA	Shield, complete	1
18	503-758B	Bolt HH 1/4"-20x2.50" G2 Z P w/nut ES 1/4"-20	1
19	503-425B	Nut HH 1/4"-20 G2 Z	1
20	501-568B	Set screw 1/4"-20x0.75" N	1
21	000-8679	Roll pin Ø8x55	1
22	5990030A	Chain, anti-rotation	2
23	950-463B	Decal "DANGER - Rotating driveline, keep away", outer shield	1
24	950-464B	Decal "DANGER - Guard missing, do not operate", outer tube	1
25	8907070A	Operator's manual, driveline AMA	1
	050-0150	Driveline, complete; 100-512 <sup>6</sup>	-

<sup>6</sup> Complete driveline is interchangeable with #050-0155.

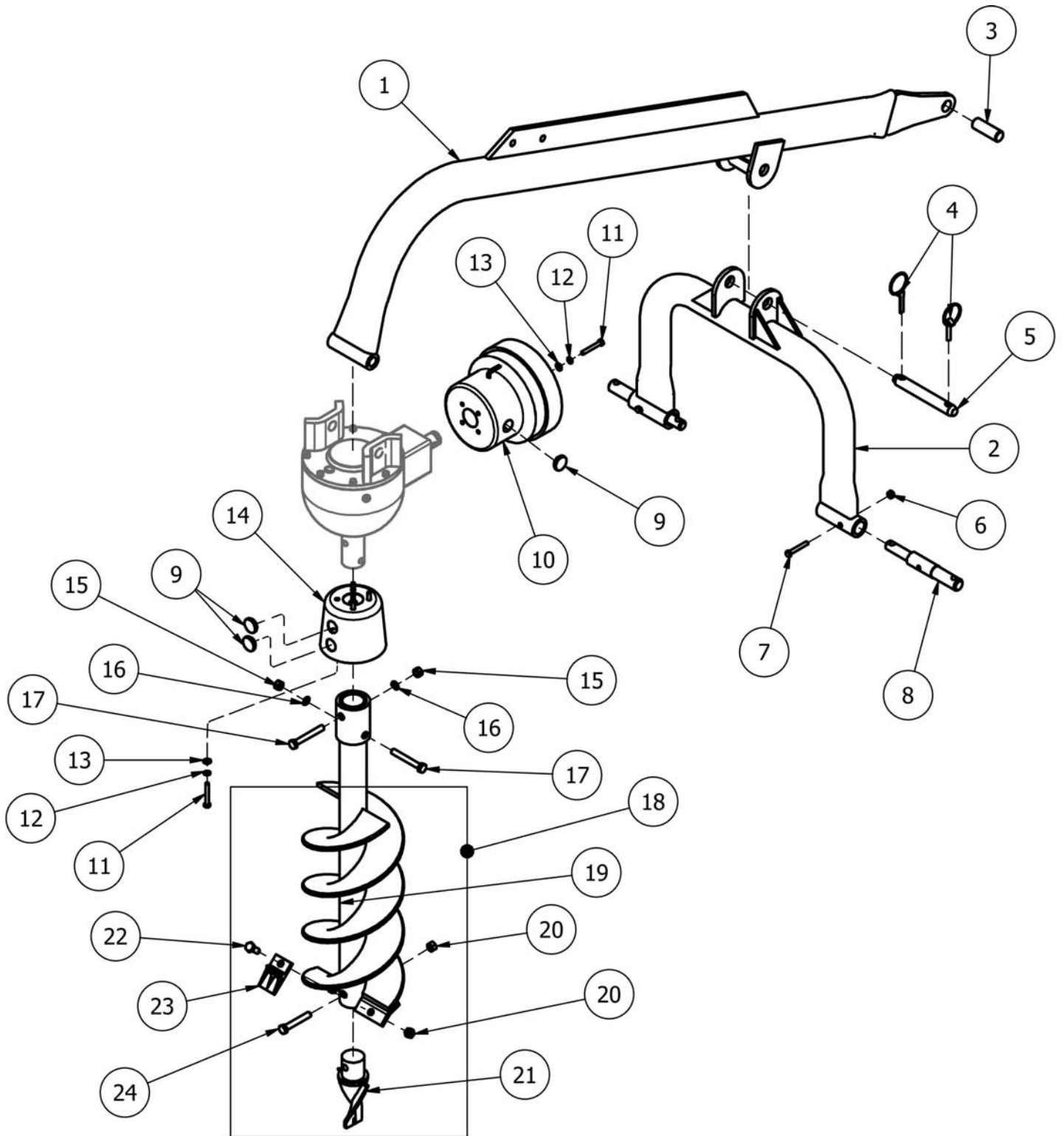


Ref.	Part #	Description	Qty.
1	0800203B	PTO yoke (tractor end)	1
2	08002021B	Yoke, outer tube	1
3	000-8679	Roll pin Ø8x55	1
4	1363091AB	Outer tube	1
5	08202B	Cross w/bearing	2
6	1294091AB	Inner tube	1
7	08002011B	Yoke, inner tube	1
8	002-6342	Roll pin Ø8x50	1
9	1B021032B	Outer tube w/yoke, complete	1
10	1B021031B	Inner tube w/yoke, complete	1
11	0201K58AB	PTO yoke (implement end)	1
12	503-425B	Nut HH 1/4"-20 G2 Z	1
13	501-568B	Set screw 1/4"-20x0.75" N	1
14	503-758B	Bolt HH 1/4"-20x2.50" G2 Z P w/nut ES 1/4"-20	1
15	5502C001B	Locking ring, outer tube; #327532 & above	1
16	1902C001B	Standard cone; #327532 & above	2
17	5402C001B	Rigid cone, outer tube; #327532 & above	1
18	98052242B	Self tapping screw PN M4.8x22 Z	6
19	961NB103B	Shield, outer tube; #327532 & above	1
20	955NB103B	Shield, inner tube; #327532 & above	1
21	5402C002B	Rigid cone, inner tube; #327532 & above	1
22	5502C002B	Locking ring, inner tube; #327532 & above	1
23	4B021032B	Shield, outer tube w/cone; #327532 & above	1
24	4B021031B	Shield, inner tube w/cone; #327532 & above	1
25	3CE02103B	Shield, complete	1
26	52000001B	Chain, anti-rotation	2
27	09872101B	Operator's manual, driveline Binacchi	1
28	09872010B	Decal "rotating driveline" pictorial - ISO standard, outer shield	1
29	950-463B	Decal "DANGER - Rotating driveline, keep away", outer shield	1
30	950-464B	Decal "DANGER - Guard missing, do not operate", outer tube	1
31	950-970B	Decal "DANGER - Entanglement hazard. Guard missing", yoke; #338885 & above	1
	050-0155	Driveline, complete; 100-512	-



Ref.	Part #	Description	Qty.
1	501-534B	Boom assembly; 200-512	1
2	501-535B	Yoke; 200-512	1
3	001-8010	Bushing cat. 2-1	1
4	001-8266	Lynch pin Ø11x45	2
5	501-544B	Pin, top link 1"x5.38" Z; #296542 & below <sup>7</sup>	1
	001-8020	Pin, hitch Ø25x148.5 Z; #296543 & above	1
6	000-6647	Cap, guard	4
7	001-8038	Guard, gearbox	1
8	503-869B	Bolt 5/16"-18x0.75" G5 Z F	8
9	160-5017	Washer lock 5/16" Z	8
10	160-5021	Washer flat 5/16" USS Z	8
11	001-8032	Guard, auger	1
12	000-1106	Nut HH M12-1.75 C6 Z MD	2
13	000-1077	Washer lock Ø12 Z	2
14	001-5122	Bolt HH M12-1.75x90 C8.8 Z P	2
15	206-531	Auger, 6" single flight 48" long, complete	-
	209-531	Auger, 9" double flighted 48" long, complete	-
	212-531	Auger, 12" double flighted 48" long, complete	-
16	7900206	6"x48" auger weldment (order complete auger)	-
	7900209	9"x48" auger weldment (order complete auger)	-
	7900212	12"x48" auger weldment (order complete auger)	-
17	003-0064	Nut PT M12-1.75 C6 TK Z; 6" auger	2
	003-0064	Nut PT M12-1.75 C6 TK Z; 9" auger	3
	003-0064	Nut PT M12-1.75 C6 TK Z; 12" auger	5
18	501-541B	Auger point, standard	1
	503-928B	Auger point, fish tail	1
19	001-5255	Bolt HH M12-1.75x30 C8.8 Z F, 6" auger	1
	001-5255	Bolt HH M12-1.75x30 C8.8 Z F, 9" auger	2
	001-5255	Bolt HH M12-1.75x30 C8.8 Z F, 12" auger	4
20	501-540B	Knife, 6" auger	1
	501-540B	Knife, 9" auger	2
	501-540B	Knife, 12" auger	4
21	019-2236	Bolt HH M12-1.75x70 C8.8 Z P	1

<sup>7</sup> Pin no longer available, to replace order one (1) hitch pin #001-8020 and one (1) lynch pin #001-8266.

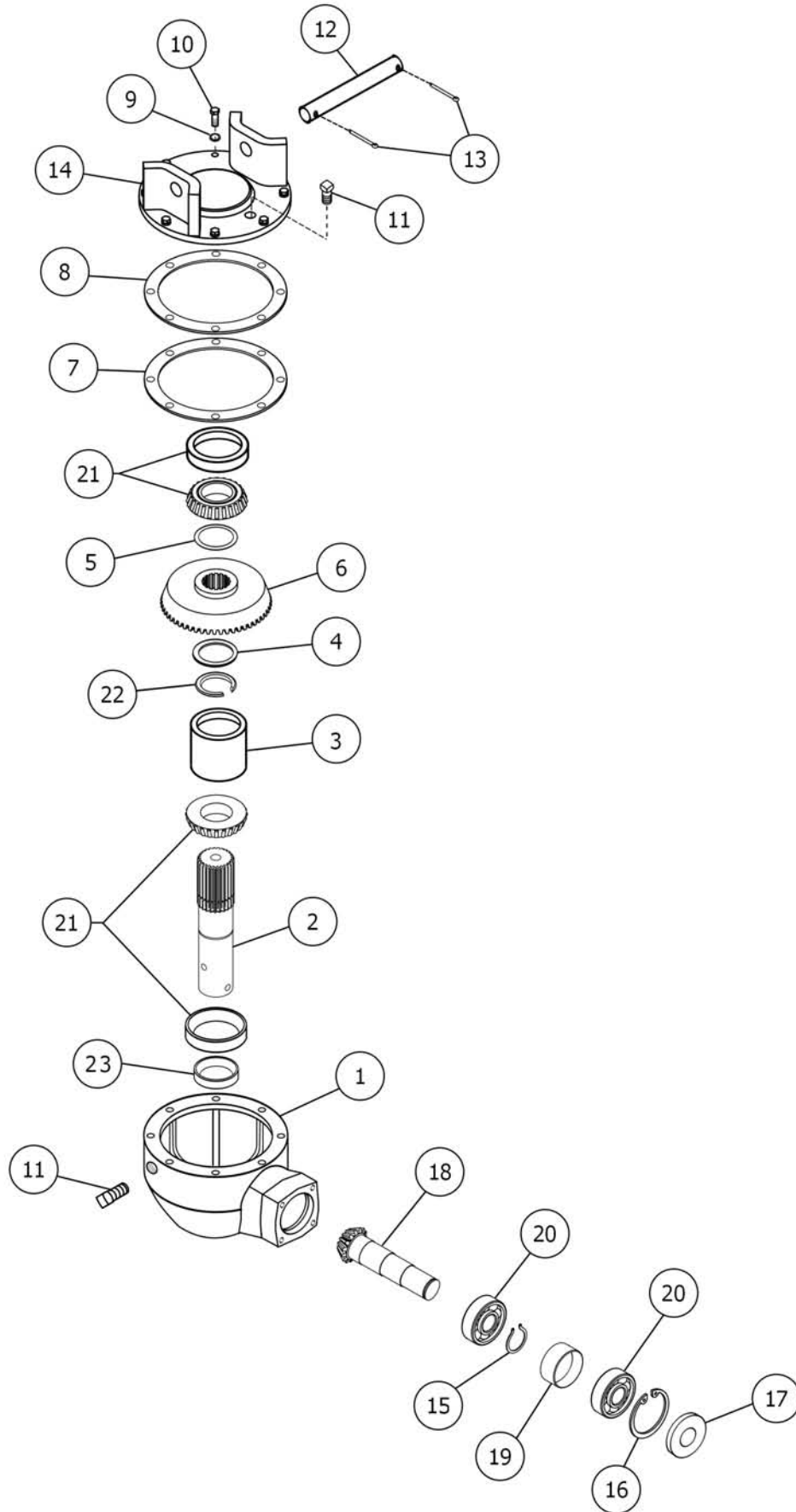


Ref.	Part #	Description	Qty.
1	501-700B	Boom assembly; 300-512	1
	503-739B	Boom assembly; 400-512	1
2	501-701B	Yoke; 300-512, 400-512 #348884 & below <sup>8</sup>	1
	001-8011	Yoke; 300-512, 400-512 #348885 & above	1
3	001-8010	Bushing cat. 2-1	1
4	001-8266	Lynch pin Ø11x45	2
5	501-544B	Pin, top link 1"x5.38" Z; #296542 & below <sup>9</sup>	1
	001-8020	Pin, hitch Ø25x148.5 Z; #296543 & above	1
6	502-868B	Nut ES 5/16"-18 Z; 300-512, 400-512	2
7	503-698B	Bolt HH 5/16"-18x2.25" G5 Z P; 300-512, 400-512	2
8	501-702B	Hitch pin cat. 1-2 Ø30.5; 300-512, 400-512 #348884 & below	2
	001-8025	Hitch pin cat. 1-2 Ø28; 300-512, 400-512 #348885 & above	2
9	000-6647	Cap, guard	4
10	001-8038	Guard, gearbox	1
11	503-869B	Bolt 5/16"-18x0.75" G5 Z F	8
12	160-5017	Washer lock 5/16" Z	8
13	160-5021	Washer flat 5/16" USS Z	8
14	001-8032	Guard, auger	1
15	000-1106	Nut HH M12-1.75 C6 Z MD	2
16	000-1077	Washer lock Ø12 Z	2
17	001-5122	Bolt HH M12-1.75x90 C8.8 Z P	2
18	218-531	Auger, 18" double flighted 48" long, complete <sup>10</sup>	-
	224-531	Auger, 24" double flighted 48" long, complete	-
	230-531	Auger, 30" double flighted 44" long, complete	-
19	7900218	18"x48" auger weldment (order complete auger)	-
	7900224	24"x48" auger weldment (order complete auger)	-
	7900230	30"x44" auger weldment (order complete auger)	-
20	003-0064	Nut PT M12-1.75 C6 TK Z; 18" Auger	7
	003-0064	Nut PT M12-1.75 C6 TK Z; 24" Auger	9
	003-0064	Nut PT M12-1.75 C6 TK Z; 30" Auger	13
21	501-541B	Auger point, standard	1
	503-928B	Auger point, fish tail	1
22	001-5255	Bolt HH M12-1.75x30 C8.8 Z F, 18" Auger	6
	001-5255	Bolt HH M12-1.75x30 C8.8 Z F, 24" Auger	8
	001-5255	Bolt HH M12-1.75x30 C8.8 Z F, 30" Auger	12
23	501-540B	Knife, 18" Auger	6
	501-540B	Knife, 24" Auger	8
	501-540B	Knife, 30" Auger	12
24	019-2236	Bolt HH M12-1.75x70 C8.8 Z P	1
	001-5122	Bolt HH M12-1.75x90 C8.8 Z P, 30" auger only	1

<sup>8</sup> Yoke no longer available, to replace order one (1) yoke #001-8011 and two (2) hitch pins #001-8025.

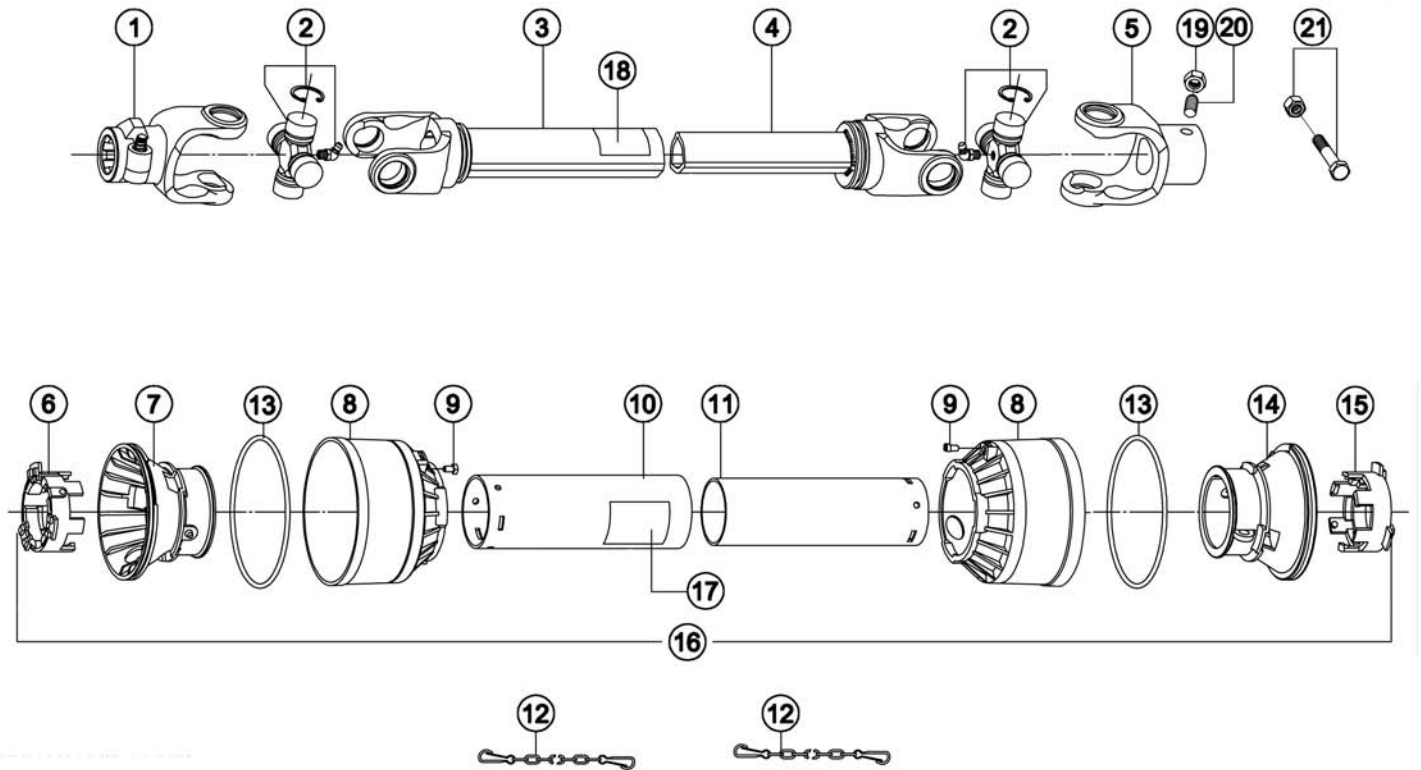
<sup>9</sup> Pin no longer available, to replace order one (1) hitch pin #001-8020 and one (1) lynch pin #001-8266.

<sup>10</sup> For references on 6", 9", 12" augers see 200-512 frame page.



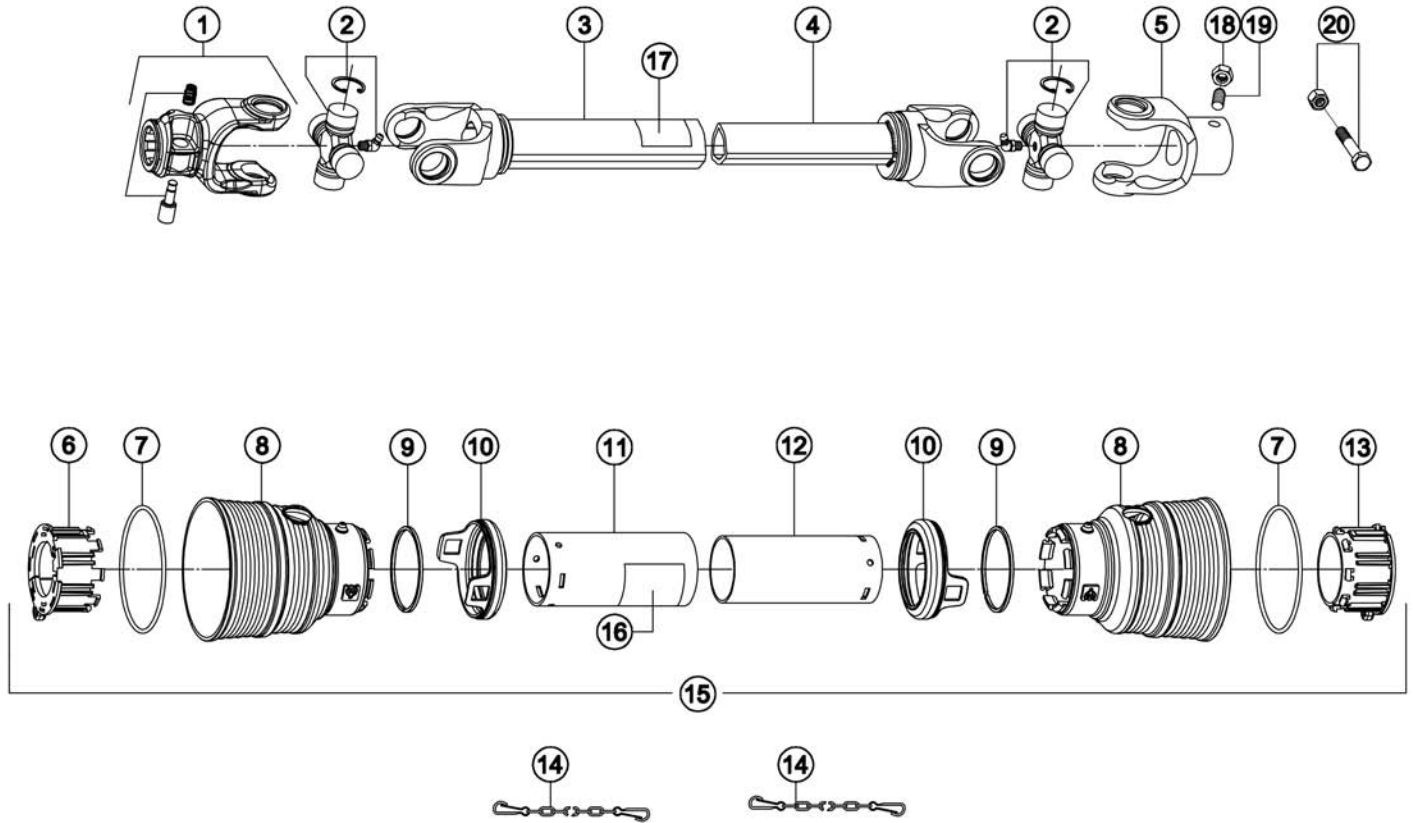


Ref.	Part #	Description	Qty.
1	502-272B	Housing, gearbox; 200-512	1
	502-248B	Housing, gearbox; 300-512	1
	503-725B	Housing, gearbox; 400-512	1
2	502-273B	Output shaft; 200-512	1
	502-249B	Output shaft; 300-512	1
	503-733B	Output shaft; 400-512	1
3	502-274B	Spacer, output bearing; 200-512	1
	502-250B	Spacer, output bearing; 300-512	1
	503-735B	Spacer, output bearing; 400-512	1
4	502-251B	Shim (0.30)	-
5	502-252B	Shim (0.50)	-
6	502-275B	Output gear Z33; 200-512	1
	502-253B	Output gear Z38; 300-512	1
	503-736B	Output gear Z44; 400-512	1
7	502-276B	Gasket, hanger cap (0.10); 200-512	-
	502-254B	Gasket, hanger cap (0.10); 300-512	-
	503-728B	Gasket, hanger cap (0.10); 400-512	-
8	502-277B	Gasket, hanger cap (0.25); 200-512	-
	502-255B	Gasket, hanger cap (0.25); 300-512	-
	503-729B	Gasket, hanger cap (0.25); 400-512	-
9	000-1280	Washer lock Ø10	8
10	000-1278	Bolt HH M10-1.50x30 C8.8 Z F	8
11	502-257B	Fill plug ½"	2
12	502-258B	Hanger shaft	1
13	000-5638	Cotter pin Ø5x50 Z	2
14	502-278B	Hanger cap; 200-512	1
	502-260B	Hanger cap; 300-512	1
	503-727B	Hanger cap; 400-512	1
15	004-2122	Snap ring, outer Ø35	1
16	002-5329	Snap ring, inner Ø72	1
17	003-0211	Oil seal 35.72.10	1
18	502-281B	Pinion gear w/shaft Z11; 200-512	1
	502-265B	Pinion gear w/shaft Z11; 300-512	1
	503-731B	Pinion gear w/shaft Z11; 400-512	1
19	502-266B	Spacer	1
20	002-5332A	Bearing 6207	2
21	000-4539	Bearing 30210	2
22	502-269B	Snap ring, outer Ø46	1
23	502-270B	Oil seal 50.70.12	1
	502-282B	Gearbox 540 rpm, complete; 200-512	-
	Note:	Fill using approx. 64 fl.oz. (2 qt.) of SAE 90W gear oil.	
	502-271B	Gearbox 540 rpm, complete; 300-512	-
	Note:	Fill using approx. 112 fl.oz. (3.5 qt.) of SAE 90W gear oil.	
	503-724B	Gearbox 540 rpm, complete; 400-512	-
	Note:	Fill using approx. 160 fl.oz. (5 qt.) of SAE 90W gear oil.	



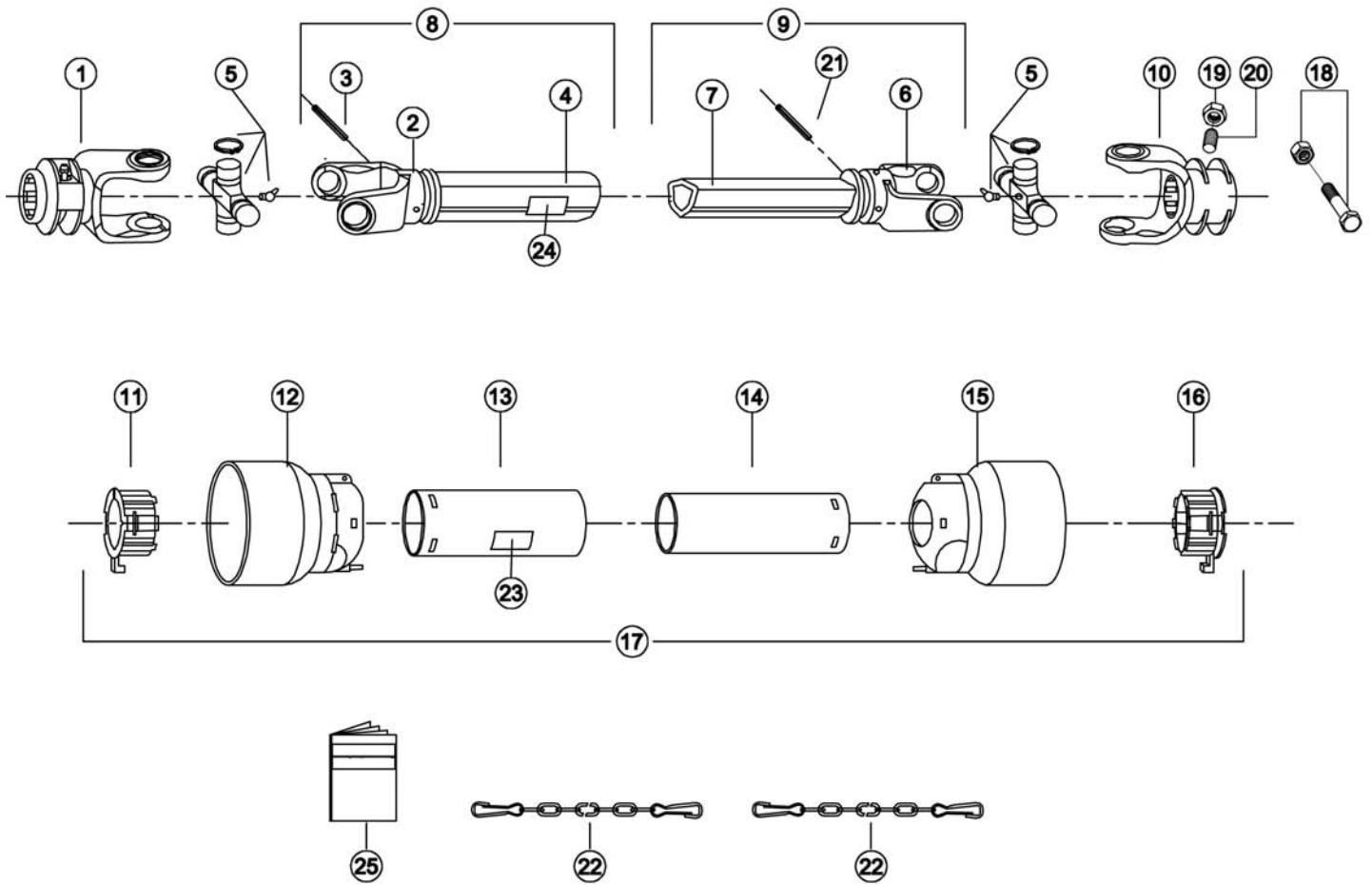
Ref.	Part #	Description	Qty.
1	1023010C	PTO yoke (tractor end)	1
2	1003020C	Cross w/bearing	2
3	1943107NC	Outer tube w/yoke	1
4	1953109NC	Inner tube w/yoke	1
5	1073040C	PTO yoke (implement end)	1
6	1784210C	Locking ring, outer tube; #289983 & below	1
7	1784201C	Rigid cone, outer tube; #289983 & below	1
8	1784203C	Standard cone; #289983 & below	2
9	1784212C	Pin; #289983 & below	2
10	1773105C	Shield, outer tube	1
11	1872105C	Shield, inner tube	1
12	1006065C	Chain, anti-rotation	2
13	1213233C	Stiffening ring; #289983 & below	2
14	1784202C	Rigid cone, inner tube; #289983 & below	1
15	1784211C	Locking ring, inner tube; #289983 & below	1
16	90SS4105C	Shield, complete <sup>11</sup>	1
17	950-463B	Decal "DANGER - Rotating driveline, keep away", outer shield	1
18	950-464B	Decal "DANGER - Guard missing, do not operate", outer tube	1
19	503-425B	Nut HH 1/4"-20 G2 Z	1
20	501-568B	Set screw 1/4"-20x0.75" N	1
21	503-254B	Bolt HH 3/8"-16x3.00" G2 Z P w/nut ES 3/8"-16	1
	050-0452	Driveline complete; 200-512, 300-512, 400-512	-

<sup>11</sup> Complete shielding is interchangeable with part #96SS4105C.



Ref.	Part #	Description	Qty.
1	1023010C	PTO yoke (tractor end)	1
2	1003020C	Cross w/bearing	2
3	1943107NC	Outer tube w/yoke	1
4	1953109NC	Inner tube w/yoke	1
5	1073040C	PTO yoke (implement end)	1
6	1784710C	Locking ring, outer tube; from #289984 to #306749	1
7	1211733C	Stiffening ring; from #289984 to #306749	2
8	1781703C	Standard cone; from #289984 to #306749	2
9	1211735C	Safety ring; from #289984 to #306749	2
10	1881709C	Safety sleeve; from #289984 to #306749	2
11	1773105C	Shield, outer tube	1
12	1872105C	Shield, inner tube	1
13	1784711C	Locking ring, inner tube; from #289984 to #306749	1
14	1006065C	Chain, anti-rotation	2
15	96SS4105C	Shield, complete	1
16	950-463B	Decal "DANGER - Rotating driveline, keep away", outer shield	1
17	950-464B	Decal "DANGER - Guard missing, do not operate", outer tube	1
18	503-425B	Nut HH 1/4"-20 G2 Z	1
19	501-568B	Set screw 1/4"-20x0.75" N	1
20	503-254B	Bolt HH 3/8"-16x3.00" G2 Z P w/nut ES 3/8"-16	1
	050-0452	Driveline complete; 200-512, 300-512, 400-512 <sup>12</sup>	-

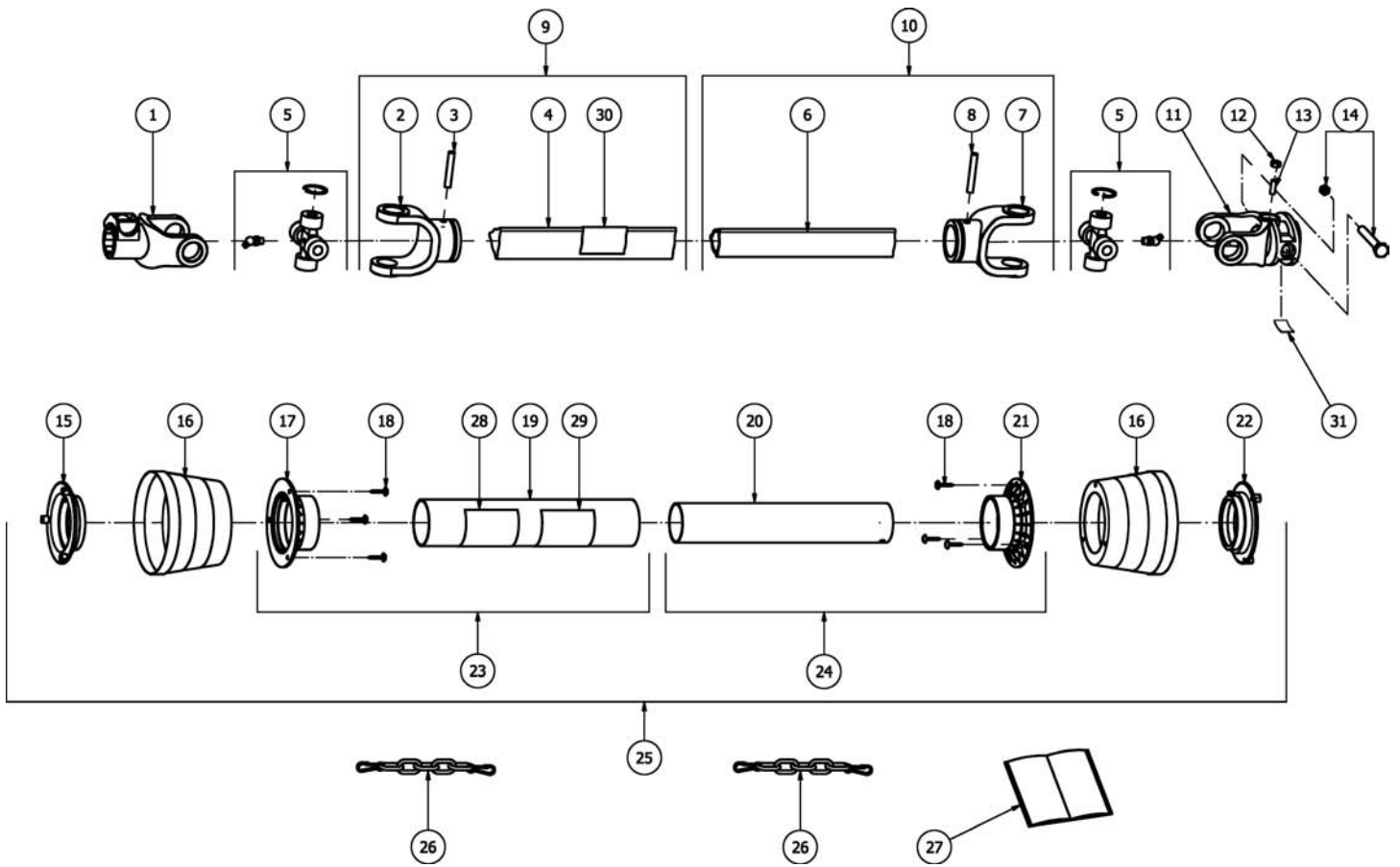
<sup>12</sup> Complete driveline is interchangeable with #050-0151.



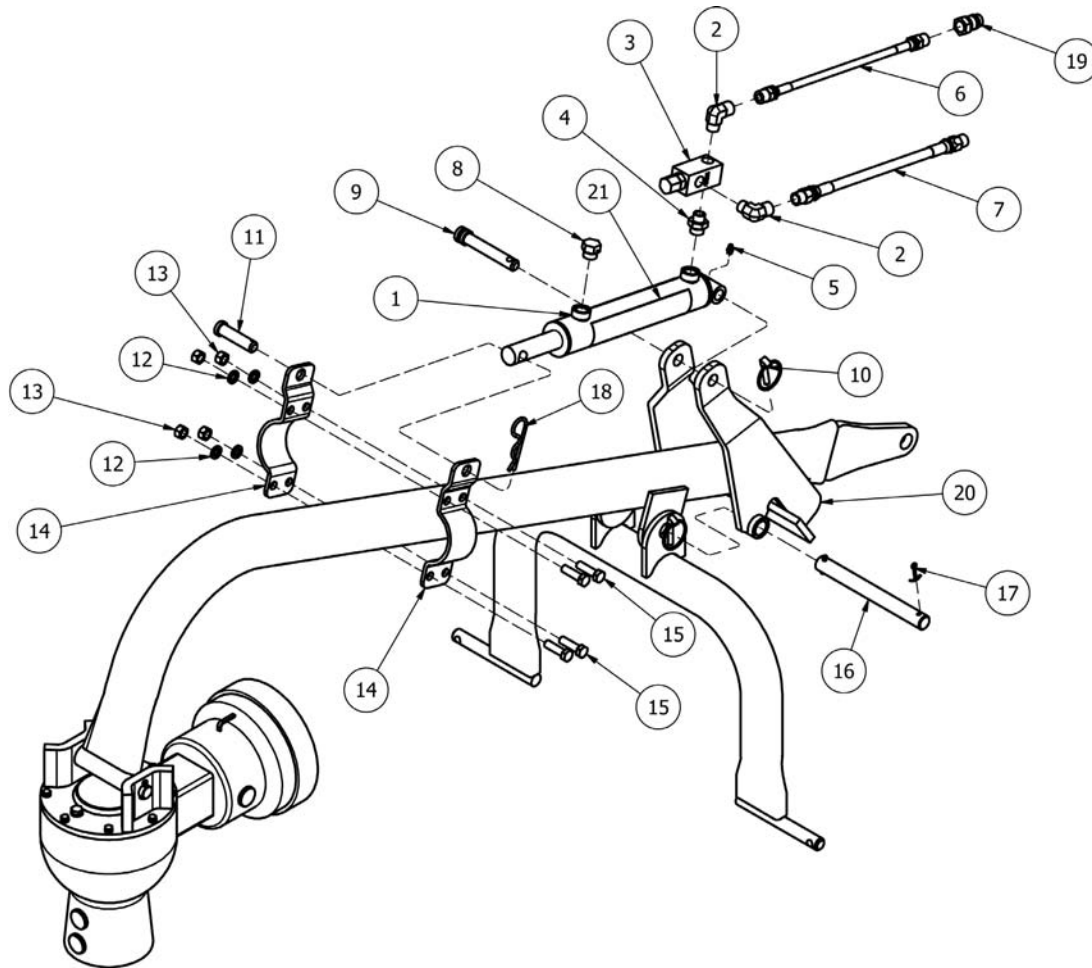
200-512, 300-512, 400-512 FROM #306750 TO #327531

Ref.	Part #	Description	Qty.
1	1003138A	PTO yoke (tractor end)	1
2	1903010A	Yoke, outer tube	1
3	001-8047	Roll pin Ø8x65	1
4	3031106A	Outer tube	1
5	1803010A	Cross w/bearing	2
6	1903012A	Yoke, inner tube	1
7	3131106A	Inner tube	1
8	Z031106A	Outer tube w/yoke, complete	1
9	Z131106A	Inner tube w/yoke, complete	1
10	1103909A	PTO yoke (implement end)	1
11	6004010A	Locking ring, outer tube; from #306750 to #327531	1
12	6014010A	Standard cone, outer tube; from #306750 to #327531	1
13	5831046EA	Shield, outer tube; from #306750 to #327531	1
14	5831046IA	Shield, inner tube; from #306750 to #327531	1
15	6014012A	Standard cone, inner tube; from #306750 to #327531	1
16	6004012A	Locking ring, inner tube; from #306750 to #327531	1
17	P33125SSA	Shield, complete	1
18	503-254B	Bolt HH 3/8"-16x3.00" G2 Z P w/nut ES 3/8"-16	1
19	503-425B	Nut HH 1/4"-20 G2 Z	1
20	501-568B	Set screw 1/4"-20x0.75" N	1
21	001-8044	Roll pin Ø8x60	1
22	5990030A	Chain, anti-rotation	2
23	950-463B	Decal "DANGER - Rotating driveline, keep away", outer shield	1
24	950-464B	Decal "DANGER - Guard missing, do not operate", outer tube	1
25	8907070A	Operator's manual, driveline AMA	1
	050-0151	Driveline complete; 200-512, 300-512, 400-512 <sup>13</sup>	-

<sup>13</sup> Complete driveline is interchangeable with #050-0156.



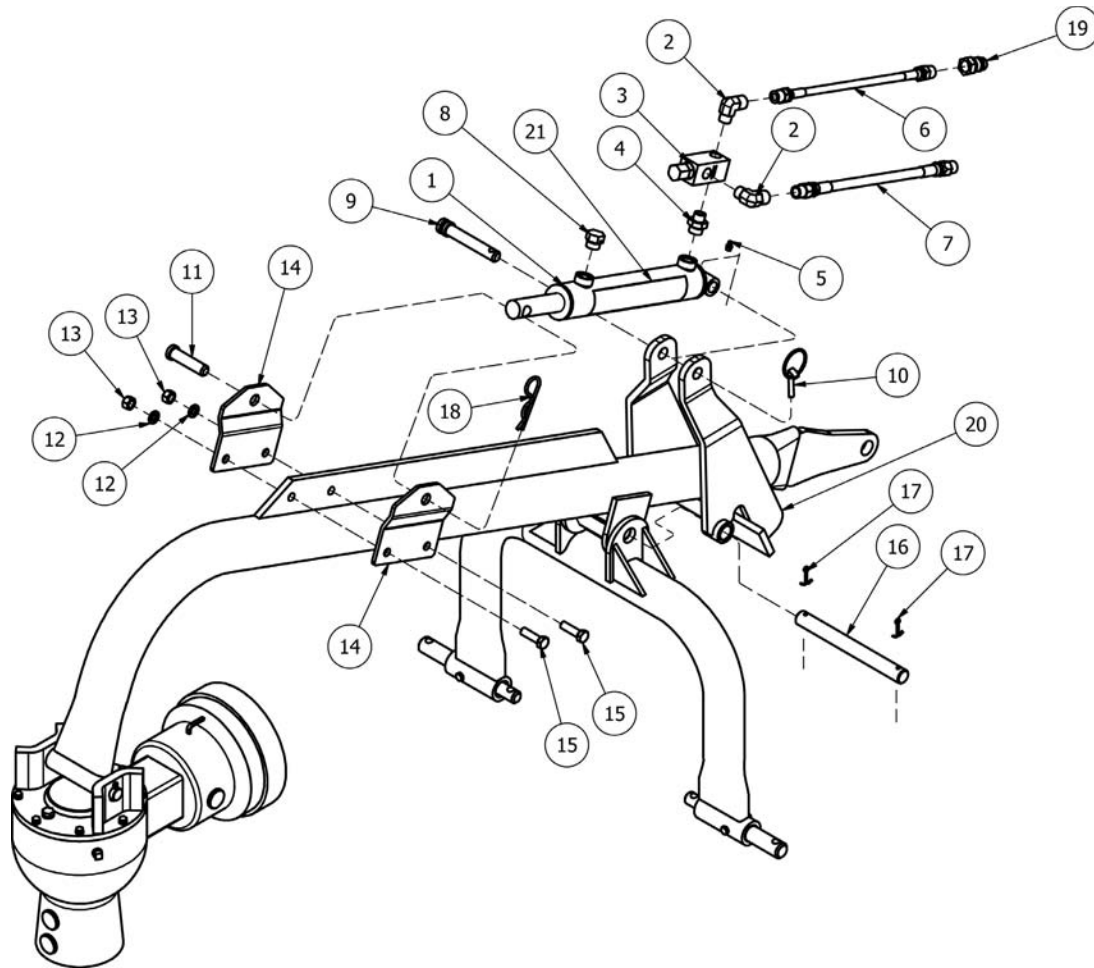
Ref.	Part #	Description	Qty.
1	0800303AB	PTO yoke (tractor end)	1
2	08003021B	Yoke, outer tube	1
3	001-8044	Roll pin Ø8x60	1
4	1433112AB	Outer tube	1
5	08203B	Cross w/bearing	2
6	1364112AB	Inner tube	1
7	08003011B	Yoke, inner tube	1
8	000-8679	Roll pin Ø8x55	1
9	1B031252B	Outer tube w/yoke, complete	1
10	1B031251B	Inner tube w/yoke, complete	1
11	0301K58AB	PTO yoke (implement end)	1
12	503-425B	Nut HH 1/4"-20 G2 Z	1
13	501-568B	Set screw 1/4"-20x0.75" N	1
14	503-254B	Bolt HH 3/8"-16x3.00" G2 Z P w/nut ES 3/8"-16	1
15	5504C001B	Locking ring, outer tube; #327532 & above	1
16	1904C001B	Standard cone; #327532 & above	2
17	5404C001B	Rigid cone, outer tube; #327532 & above	1
18	98052242B	Self tapping screw PN M4.8x22 Z	6
19	966NB125B	Shield, outer tube; #327532 & above	1
20	961NB125B	Shield, inner tube; #327532 & above	1
21	5404C002B	Rigid cone, inner tube; #327532 & above	1
22	5504C002B	Locking ring, inner tube; #327532 & above	1
23	4B031262B	Shield, outer tube w/cone; #327532 & above	1
24	4B031261B	Shield, inner tube w/cone; #327532 & above	1
25	3CE03125B	Shield, complete	1
26	52000001B	Chain, anti-rotation	2
27	09872101B	Operator's manual, driveline Binacchi	1
28	09872010B	Decal "rotating driveline" pictorial - ISO standard, outer shield	1
29	950-463B	Decal "DANGER - Rotating driveline, keep away", outer shield	1
30	950-464B	Decal "DANGER - Guard missing, do not operate", outer tube	1
31	950-970B	Decal "DANGER - Entanglement hazard. Guard missing", yoke; #338885 & above	1
	050-0156	Driveline, complete; 200-512, 300-512, 400-512	-



Ref.	Part #	Description	Qty.
1	503-824B	Hydraulic cylinder <sup>14</sup>	1
2	7900008	90° Elbow 1/2" FNPTx1/2" MNPT	2
3	503-823B	Relief valve	1
4	7900009	Adapter STR. 1/2" MNPT-3/4" MORB	1
5	502-447B	Fitting, grease 1/4" PR STR Z	1
6	503-825B	Hydraulic hose 1/4"x40", 1/2" MPx1/2" MP	1
7	503-826B	Hydraulic hose 3/8"x40", 1/2" MPx1/2" MP	1
8	503-953B	Breather plug 3/4"-16 MORB	1
9	503-835B	Pin Ø3/4"x3.875"	1
10	001-8266	Lynch pin Ø11x45	1
11	503-833B	Pin Ø3/4"x3"	1
12	005-2892	Washer lock 1/2" Z	4
13	502-418B	Nut HH 1/2"-13 G2 Z	4
14	503-954B	Mounting plate, down pressure kit; 200-512	2
15	503-700B	Bolt HH 1/2"-13x1.75" G5 Z F	4
16	503-832B	Pin Ø1"x9.75"	1
17	000-5638	Cotter pin Ø5x50 Z	2
18	503-834B	Hairpin cotter Ø0.13"x2.50" Z	1
19	502-170B	1/2" Quick connector nipple 1/2" FP	1
20	503-863B	Support, down pressure kit	1
21	950-408B	Decal "WARNING - High pressure hydraulic oil leaks"	1
	PHD-005	Hydraulic down pressure kit, complete; 200-512	-

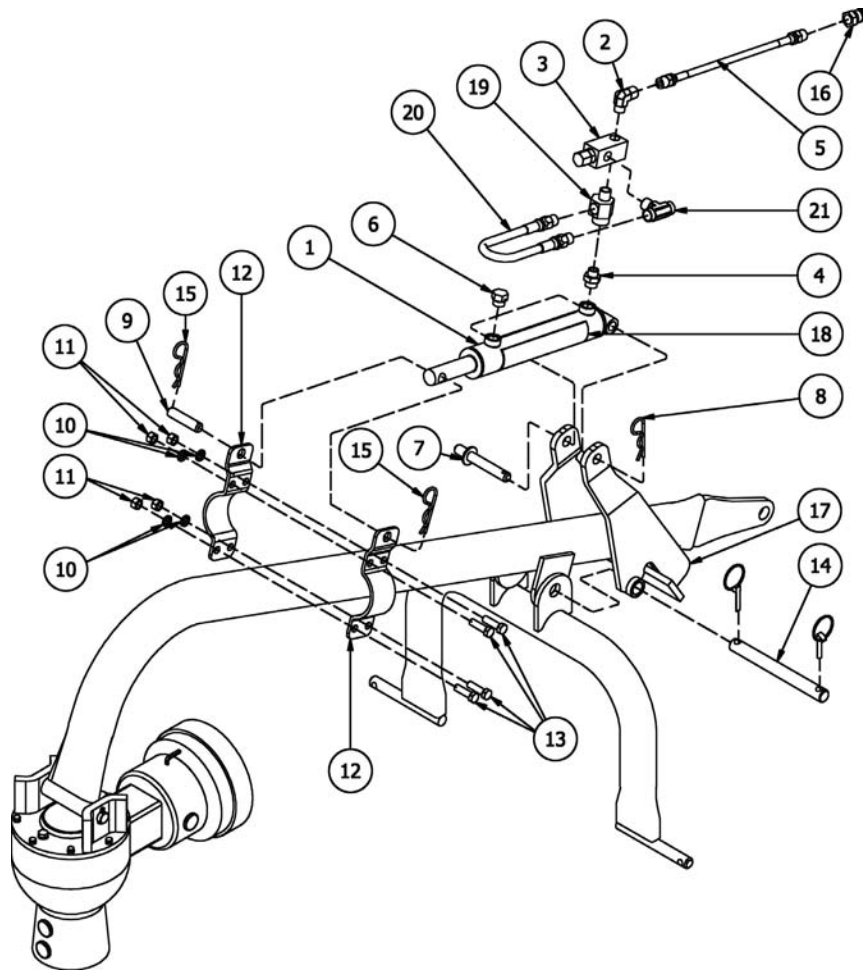
<sup>14</sup> Hydraulic cylinder is interchangeable with #001-8152.



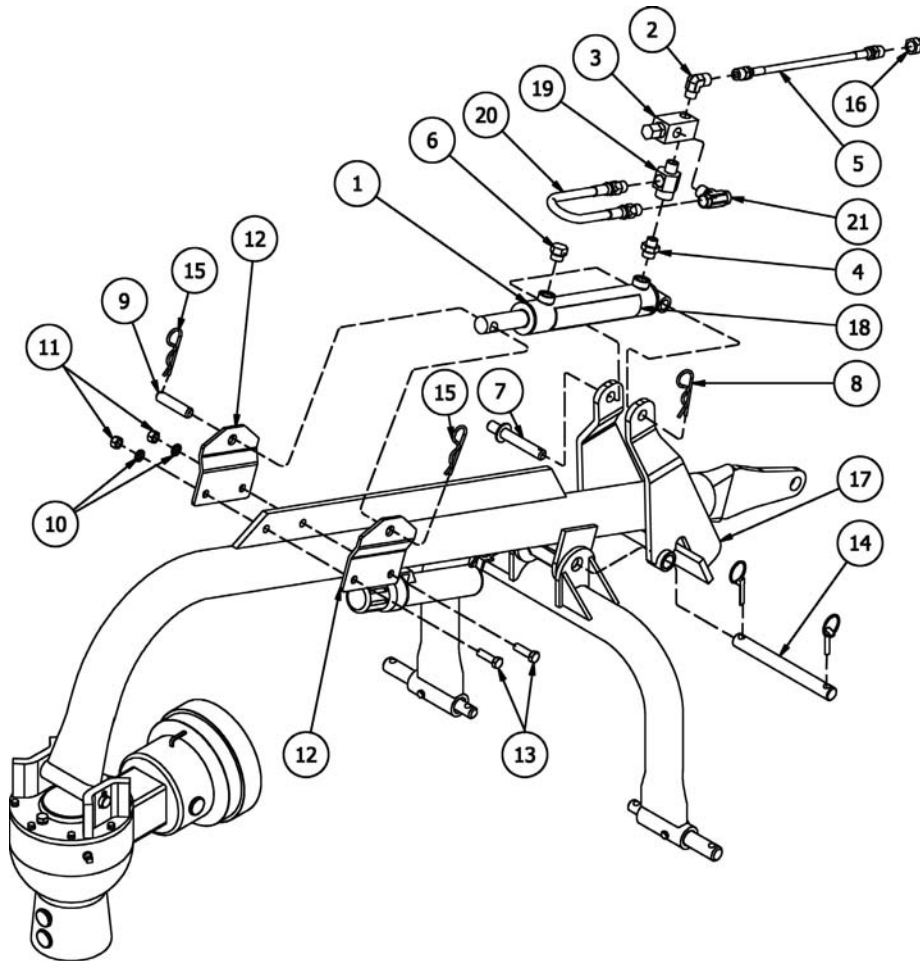


Ref.	Part #	Description	Qty.
1	503-824B	Hydraulic cylinder <sup>15</sup>	1
2	7900008	90° Elbow 1/2" FNPTx1/2" MNPT	2
3	503-823B	Relief valve	1
4	7900009	Adapter STR. 1/2" MNPT-3/4" MORB	1
5	502-447B	Fitting, grease 1/4" PR STR Z	1
6	503-825B	Hydraulic hose 1/4"x40", 1/2" MPx1/2" MP	1
7	503-826B	Hydraulic hose 3/8"x40", 1/2" MPx1/2" MP	1
8	503-953B	Breather plug 3/4"-16 MORB	1
9	503-835B	Pin Ø3/4"x3.875"	1
10	001-8266	Lynch pin Ø11x45	1
11	503-833B	Pin Ø3/4"x3"	1
12	005-2892	Washer lock 1/2" Z	2
13	502-418B	Nut HH 1/2"-13 G2 Z	2
14	503-845B	Mounting plate, down pressure kit; 300-512, 400-512	2
15	503-700B	Bolt HH 1/2"-13x1.75" G5 Z F	2
16	503-832B	Pin Ø1"x9.75"	1
17	000-5638	Cotter pin Ø5x50 Z	2
18	503-834B	Hairpin cotter Ø0.13"x2.50" Z	1
19	502-170B	1/2" Quick connector nipple 1/2" FP	1
20	503-863B	Support, down pressure kit	1
21	950-408B	Decal "WARNING - High pressure hydraulic oil leaks"	1
	PHD-002	Hydraulic down pressure kit, complete; 300-512, 400-512	-

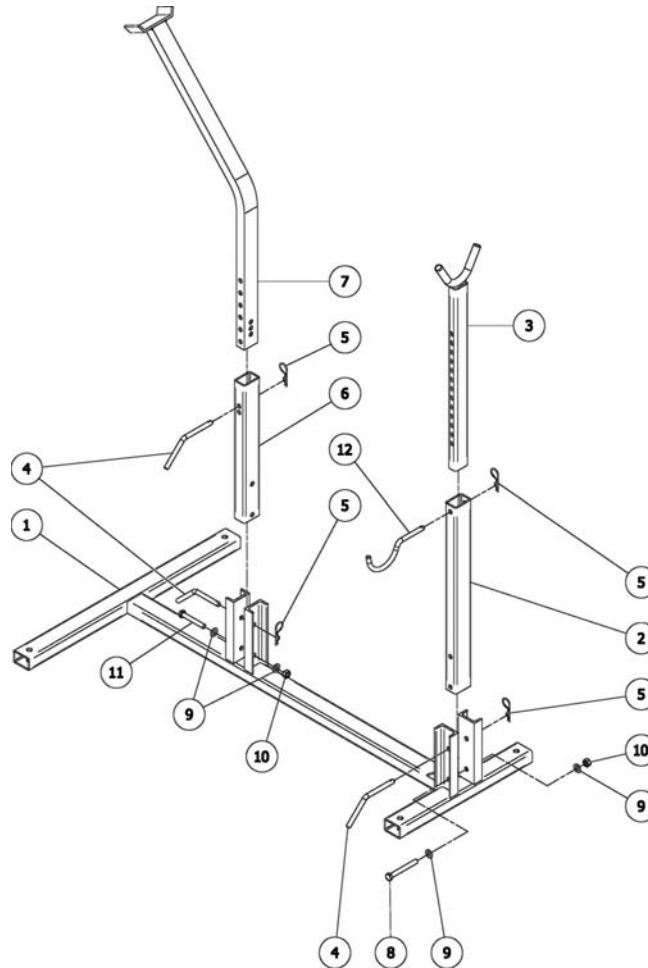
<sup>15</sup> Hydraulic cylinder is interchangeable with #001-8152.



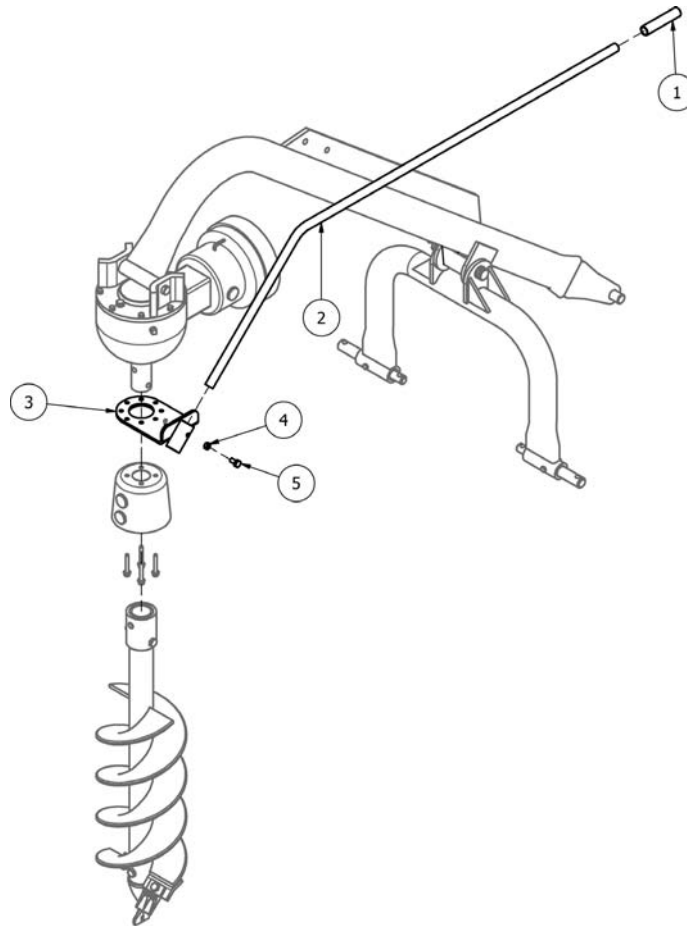
Ref.	Part #	Description	Qty.
1	001-8152	Hydraulic cylinder	1
2	7900008	90° Elbow 1/2" FNPTx1/2" MNPT	1
3	503-823B	Relief valve	1
4	7900009	Adapter STR. 1/2" MNPT-3/4" MORB	1
5	503-825B	Hydraulic hose 1/4"x40", 1/2" MPx1/2" MP	1
6	503-953B	Breather plug 3/4"-16 MORB	1
7	503-835B	Pin Ø3/4"x3.875"; (until 01/2018)	1
	502-933B	Pin, top hitch Ø19x140 Z (since 02/2018)	1
8	001-8266	Lynch pin Ø11x45; (until 01/2018)	1
	009-1507	Hairpin cotter Ø4 Z; (since 02/2018)	1
9	503-833B	Pin Ø3/4"x3"	1
10	000-1077	Washer lock Ø12 Z	4
11	000-3038	Nut HH M12-1.75 C6 Z TK	4
12	503-954B	Mounting plate, down pressure kit; 200-512	2
13	000-7716	Bolt HH M12-1.75x45 C8.8 Z F	4
14	503-832B	Pin Ø1"x9.75"	1
15	001-5240	Hairpin cotter Ø3 Z	2
16	502-170B	1/2" Quick connector nipple 1/2" FP	1
17	503-863B	Support, down pressure kit	1
18	950-408B	Decal "WARNING - High pressure hydraulic oil leaks"	1
19	001-8161	Shuttle valve	1
20	001-8151	Hydraulic hose 3/8"x22" 1/2" MPx1/2" MP	1
21	001-8158	Tee 1/2" MNPTx1/2" FNPTx1/2" FNPT	1
	009-9154	Hydraulic down pressure kit w/up relief, complete; 200-512	-



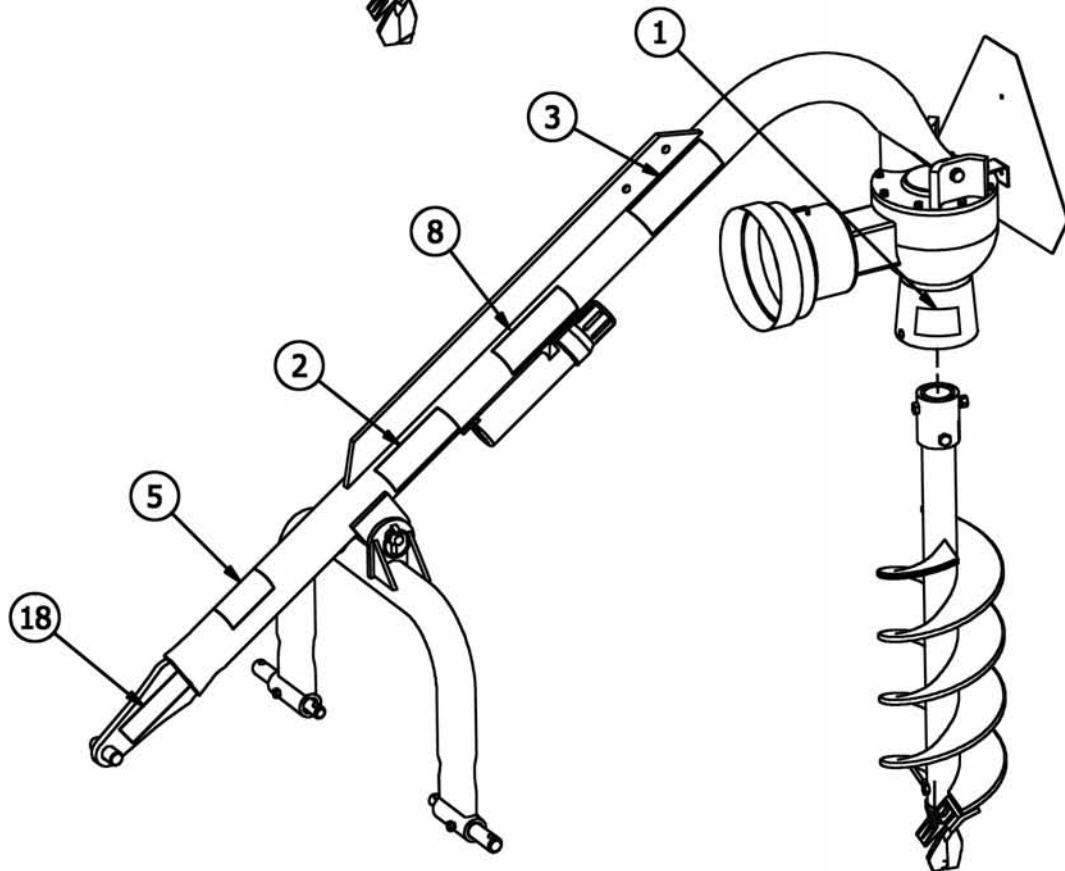
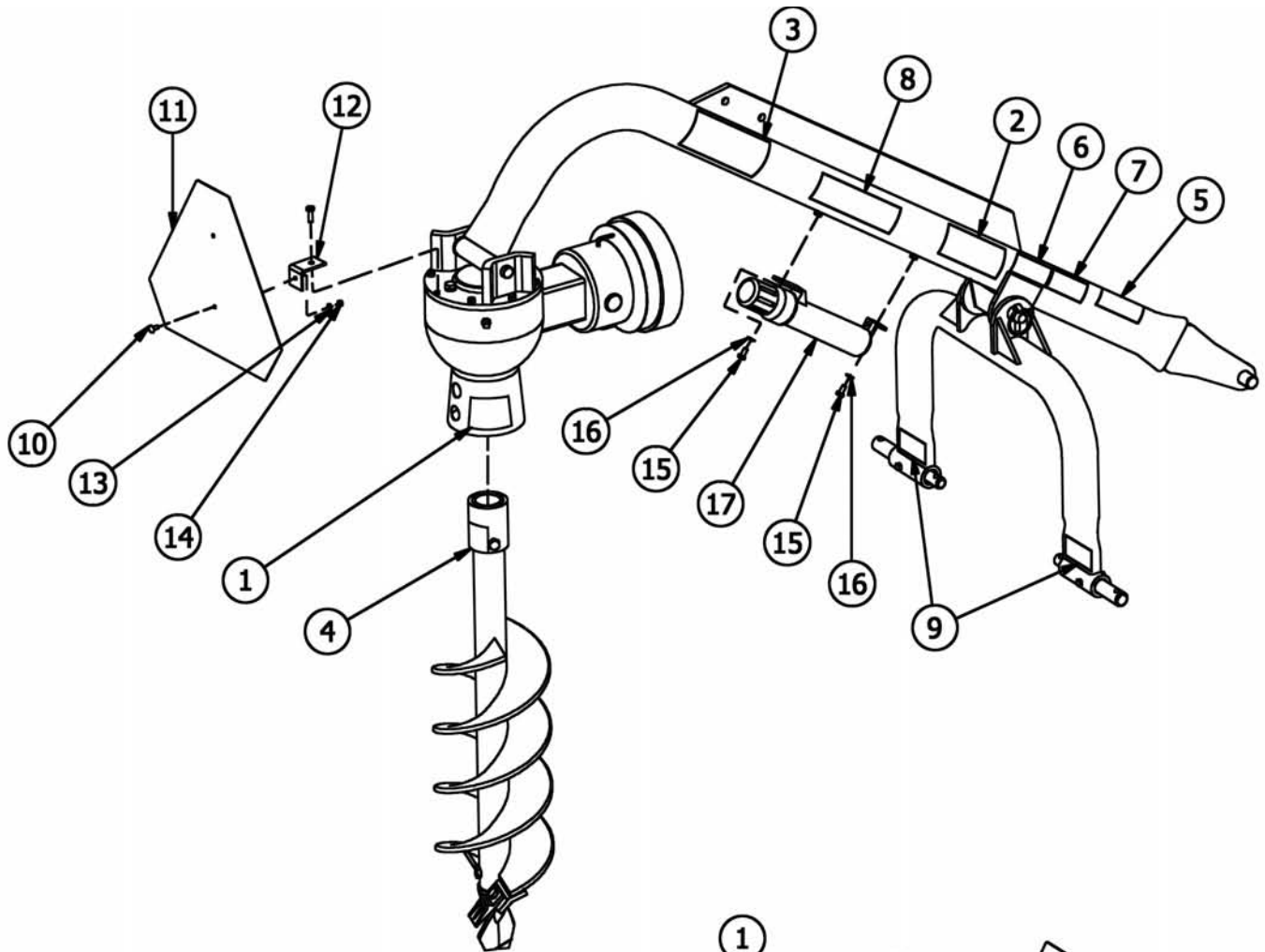
Ref.	Part #	Description	Qty.
1	001-8152	Hydraulic cylinder	1
2	7900008	90° Elbow 1/2" FNPTx1/2" MNPT	1
3	503-823B	Relief valve	1
4	7900009	Adapter STR. 1/2" MNPT-3/4" MORB	1
5	503-825B	Hydraulic hose 1/4"x40", 1/2" MPx1/2" MP	1
6	503-953B	Breather plug 3/4"-16 MORB	1
7	503-835B	Pin Ø3/4"x3.875"; (until 01/2018)	1
	502-933B	Pin, top hitch Ø19x140 Z (since 02/2018)	1
8	001-8266	Lynch pin Ø11x45; (until 01/2018)	1
	009-1507	Hairpin cotter Ø4 Z; (since 02/2018)	1
9	503-833B	Pin Ø3/4"x3"	1
10	000-1077	Washer lock Ø12 Z	2
11	000-3038	Nut HH M12-1.75 C6 Z TK	2
12	503-845B	Mounting plate, down pressure kit; 300-512, 400-512	2
13	000-7716	Bolt HH M12-1.75x45 C8.8 Z F	2
14	503-832B	Pin Ø1"x9.75"	1
15	001-5240	Hairpin cotter Ø3 Z	2
16	502-170B	1/2" Quick connector nipple 1/2" FP	1
17	503-863B	Support, down pressure kit	1
18	950-408B	Decal "WARNING - High pressure hydraulic oil leaks"	1
19	001-8161	Shuttle valve	1
20	001-8151	Hydraulic hose 3/8"x22" 1/2" MPx1/2" MP	1
21	001-8158	Tee 1/2" MNPTx1/2" FNPTx1/2" FNPT	1
	009-9155	Hydraulic down pressure kit w/up relief, complete; 300, 400-512	-



Ref.	Part #	Description	Qty.
1	001-8100	Stand base	1
2	001-8107	Long bending tube	1
3	001-8110	Support tube	1
4	008-4619	Pin locking Ø12x80 Z	3
5	001-5240	Hairpin cotter Ø3 Z	4
6	001-8120	Short bending tube	1
7	001-8125	Support tube, gearbox	1
8	003-4286	Bolt HH M12-1.75x100 C8.8 Z P	1
9	000-2265	Washer flat Ø12 W	4
10	003-0064	Nut PT M12-1.75 C6 TK Z	2
11	009-1495	Bolt HH M12-1.75x80 C8.8 Z P	1
12	001-8109	Support pin, driveline	1
	009-9851	Hookup stand, complete	-



Ref.	Part #	Description	Qty.
1	503-876B	Grip, positioning handle	1
2	503-969B	Tube, positioning handle	1
3	503-970B	Mounting plate, positioning handle	1
4	000-1279	Nut HH M10-1.50 C6 Z TK	1
5	000-6349	Bolt HH M10-1.50x20 C8.8 Z F	1
	PHD-003	Positioning handle, complete	-



100-512, 200-512, 300-512, 400-512

Ref.	Part #	Description	Qty.
1	950-212B	Decal "DANGER - Rotating auger, stay away"	2
2	950-109B	Decal "DANGER - Avoid injury from PTO"	2
3	950-969B	Decal "DANGER - Entanglement hazard" <sup>16</sup>	2
4	950-360B	Decal "DANGER - Guard missing do not operate"	1
5	950-962B	Decal "811 - Call before you dig"	1
6	950-337B	Decal "100"; 100-512	1
	950-328B	Decal "200"; 200-512	1
	950-327B	Decal "300"; 300-512	1
	950-371B	Decal "400"; 400-512	1
7	950-963B	Decal "512"	1
8	950-106B	Decal "BEFCO" SM; 100-512	2
	950-107B	Decal "BEFCO" MD; 200-512, 300-512, 400-512	2
9	950-366B	Decal, red reflective	2
10	004-6535	Bolt CR M06-1.00x16 C4.6 Z	1
11	950-352B	Decal "SMV" plastic emblem (option)	1
12	001-8065	Mounting bracket, SMV sign (option)	1
13	004-6536	Washer lock Ø06 Z (option)	1
14	501-603B	Nut HH M06-1.00 C6 Z TK (option)	1
15	001-8051	Bolt HH M08-1.25x12 C8.8 Z F	2
16	001-5230	Washer flat Ø08 Z	2
17	7900060	Manual holder Ø2"x12.50"; #327532 & above	1
18	---	Decal, serial number	1
	960-125B	Operator's Manual "Mole 100-512, 200-512, 300-512, 400-512"	1
	961-125B	Parts Manual "Mole 100-512, 200-512, 300-512, 400-512"	1

## Use only original spare parts

*All rights reserved. It is unlawful to copy, reprint or use any of the information or details in this manual without the expressed written permission of the Company. Technical information provided in this manual is approximate, the Company reserves the right to modify or improve the models shown for technical or commercial purposes. Pictures in this manual do not necessarily show the machine as delivered.*

<sup>16</sup> From serial #338885 decal 950-969B replaces decals 950-222B, 950-223B and 950-224B.

---

**BEFCO**<sup>®</sup>

P.O. Box 6036  
Rocky Mount, NC 27802-6036  
Tel.: 252.977.9920 - Fax: 252.977.9718  
[www.befco.com](http://www.befco.com)

